



The Cultural Quarter

Scale 1: 100



Aims and Objectives:

- To create open green spaces that provide social and recreational opportunities.
- To develop Bradford as a child friendly city by providing opportunities for exploration and play.
- To increase biodiversity in Bradford City Centre.
- To construct routes for disability access through the site.

Key:

- Granite Y Pattern Paving
- Grass Lawn
- Sandstone Paving
- Mosaic Indian sandstone Paving
- Resin Bound Gravel
- Ramp
- Bronze Powder Coated Aluminium
- Ornamental planting beds
- Teak wooden benches
- Wild Flower Meadow



The Cultural quarter aims to create a cohesive landscape where both people and wildlife have a place within Bradford City Centre. Building on LA504, this developed design maintains defined pathways and disabled access, social areas, creative play sculptures and green spaces improving biodiversity.

Ornamental Planting



By using particular plants to attract pollinators, biodiversity will increase. The majority of the ornamental plants above have received the RHS pollinators award and are ideal for a variety of pollinating insects.

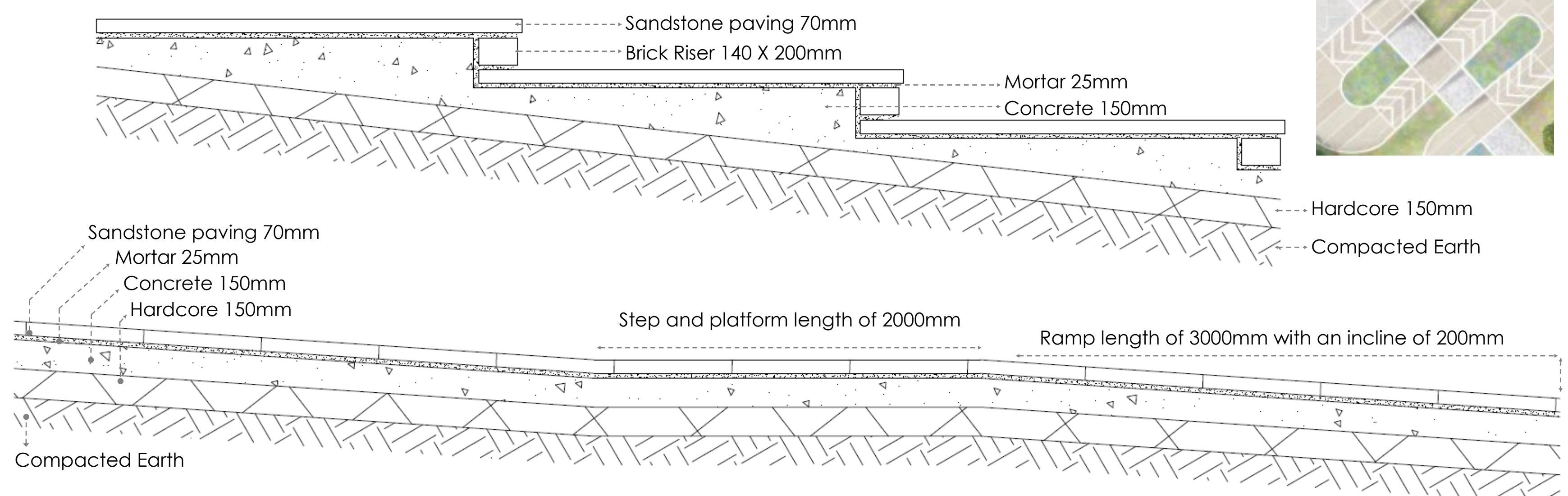
In order to entice bees to make the place their home, ornamental planting is combined with Mason Bee Hives. While the trees accommodate bat boxes developing the ecosystem.

A natural barrier to the street art is created by the wild flower meadow, which also creates an ecosystem and a refuge for wildlife. The meadow will be shaped at the edges by a mown lawn creating recreational and social spaces.



Ramp and steps

Scale 1:20



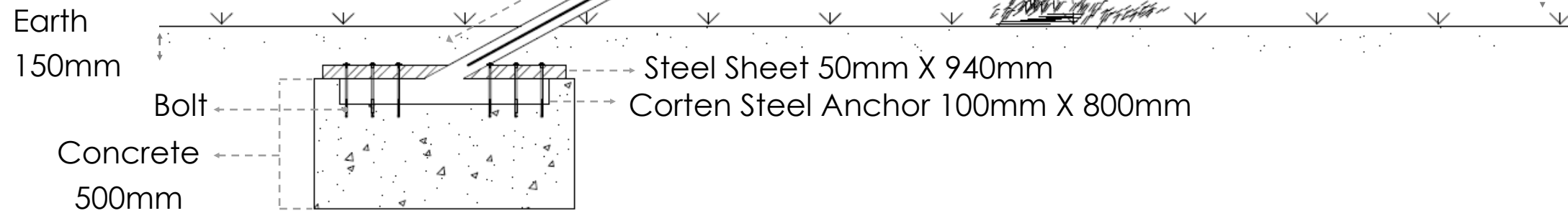
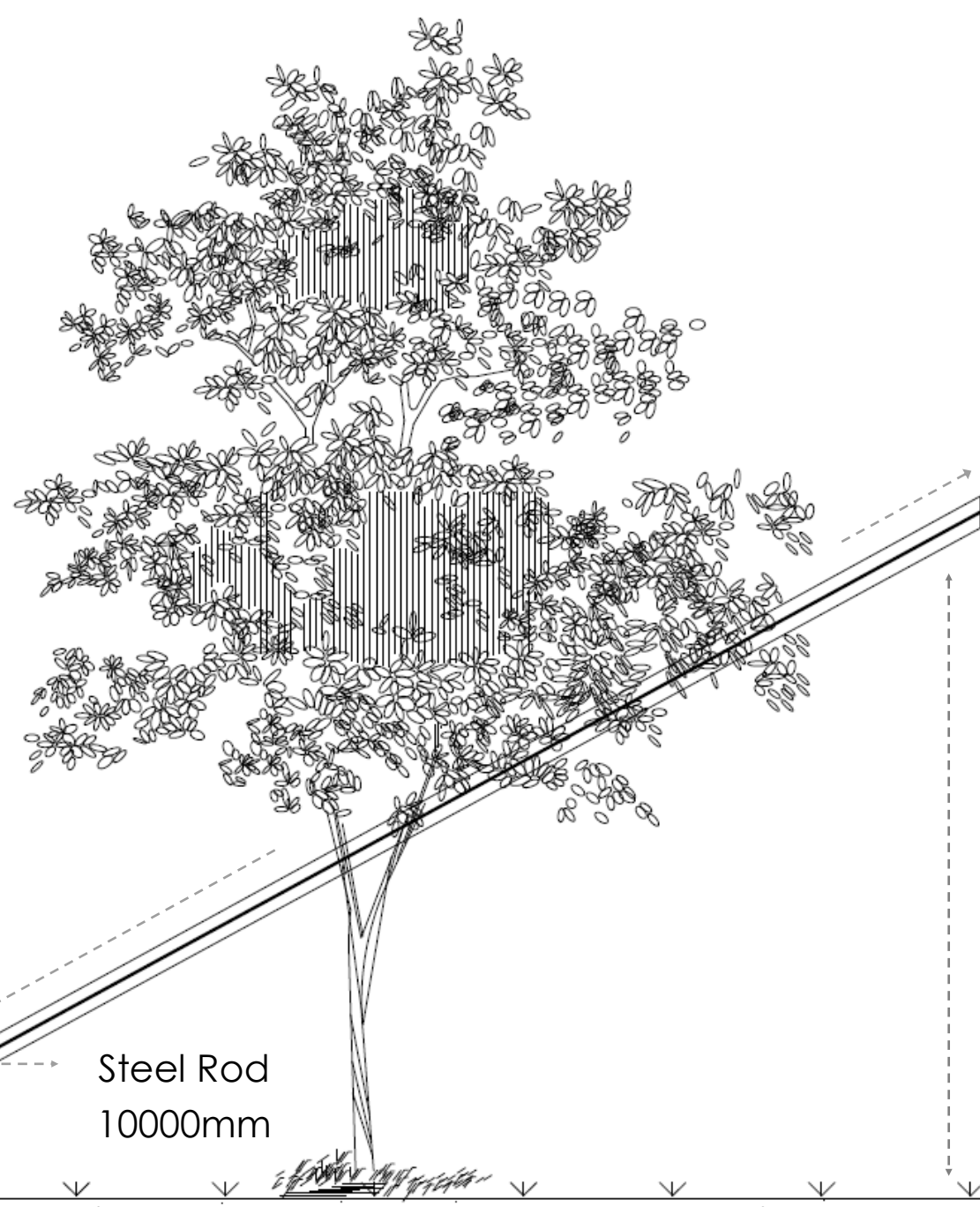
The ramp creates disabled access to the design whilst the stair case through the centre provide a faster alternative route for more able users.

The five ramps have shallow inclines of 200mm and are divided by the steps and curved platforms on either ends.

The tactile transition in material between the ramp and the steps provides a safe path for the blind while also enhancing the design's aesthetics.

Corten steel structure

Scale 1:20



2000mm high



Bradford City Centre currently doesn't offer many recreational opportunities for children. The bronze powder coated aluminium structures allow for creative play within the design whilst maintaining a minimal stylistic sculpture.

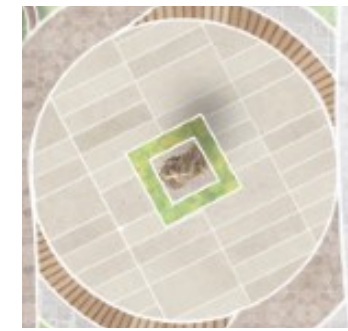
Each hoop allows for different opportunities and acts of play. The smaller hoop, no higher than a bench can be used to sit and relax or climb for younger children. The medium hoop offers a slope to slide down. While the largest hoop could be used to climb or swing on.

Constructed of aluminium the structures are strong and allow for grip. Grass lawn underneath creates a soft landing while the ornamental planting encloses the space for safety.



Bench Planter Detail

Scale 1:5



The bench planter surrounds the Oastler statue creating an enclosed social space. The planter consists of concrete which encompasses growing medium for the plants and a drainage system at the base. Further along the bench, wooden slats create a minimal and comfortable seat for users to relax and socialise within the space.

