

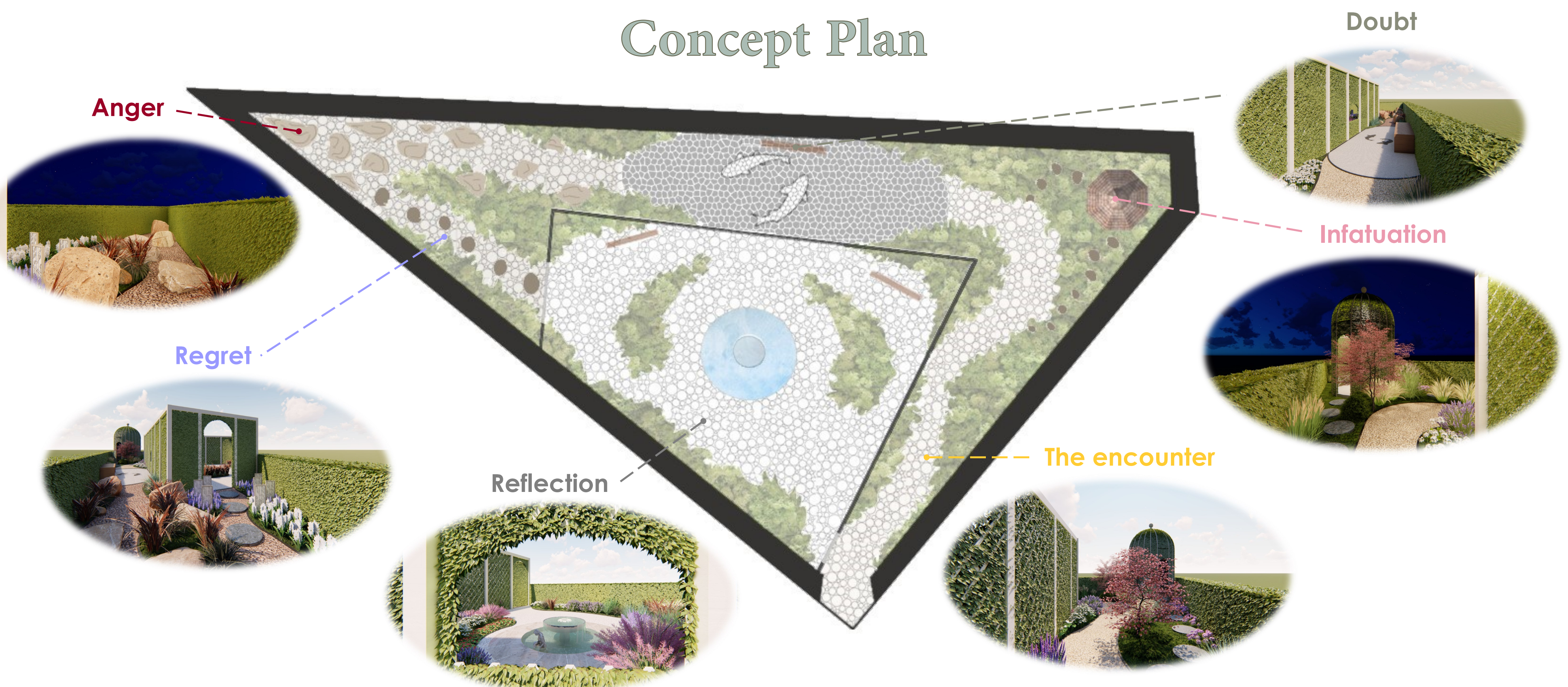
# Jardim da Moura



Scale 1:100

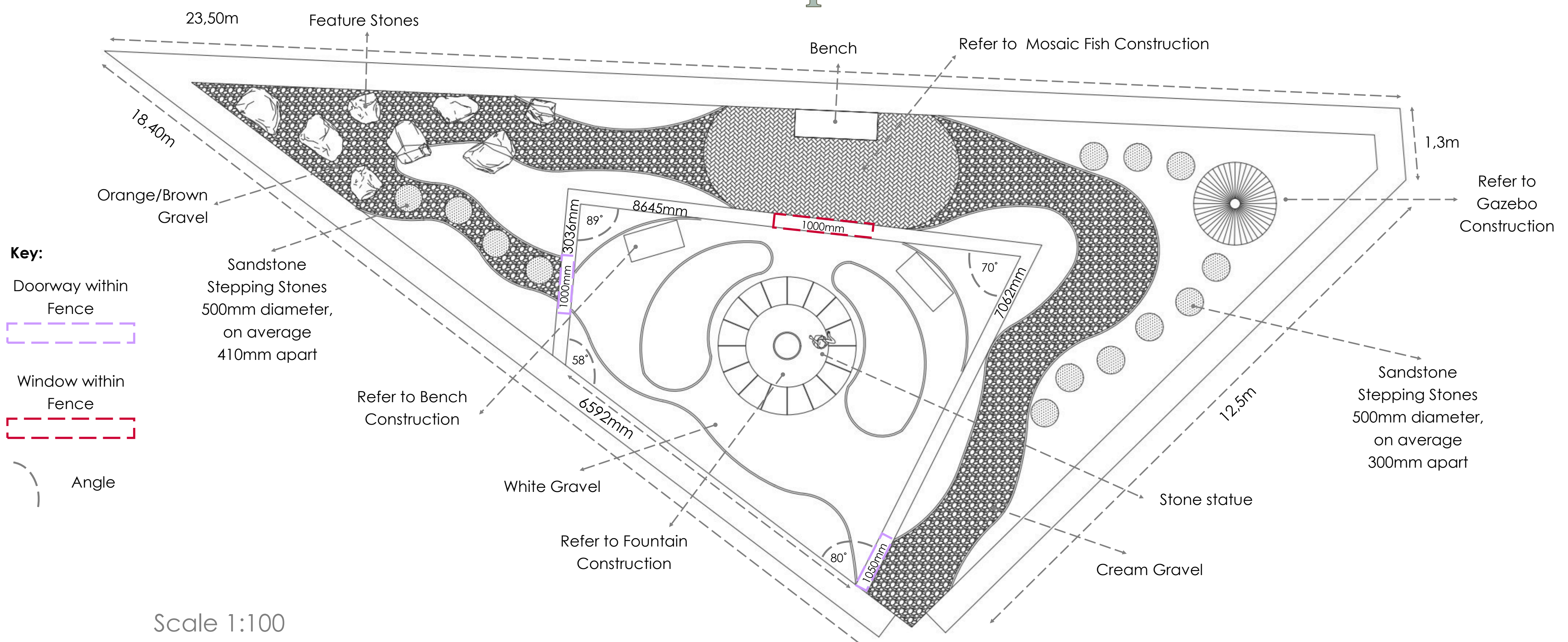
The garden was inspired by the old Ponte de Lima tale called "A mal degolada". This is a tale of forbidden love between a Christian man and a Moorish woman, due to their different religious backgrounds their love must be kept secret. One day the man is told that his lover meets another man every night by the fountain of their village. He could not believe this is true and decides to see for himself. As the night approaches, he hides next to the fountain and discovers that what he has been told is true. In a fit of blind rage, he lunges at his lover repeatedly stabbing her in the neck. In the mist of the chaos the man that was with her starts screaming saying "How could you have killed her. A woman so devoted and in love with you that she turned to Christianity! I had just finished baptizing!" The man was a friar who met the woman every night by the fountain so her family would not grow suspicions.

## Concept Plan

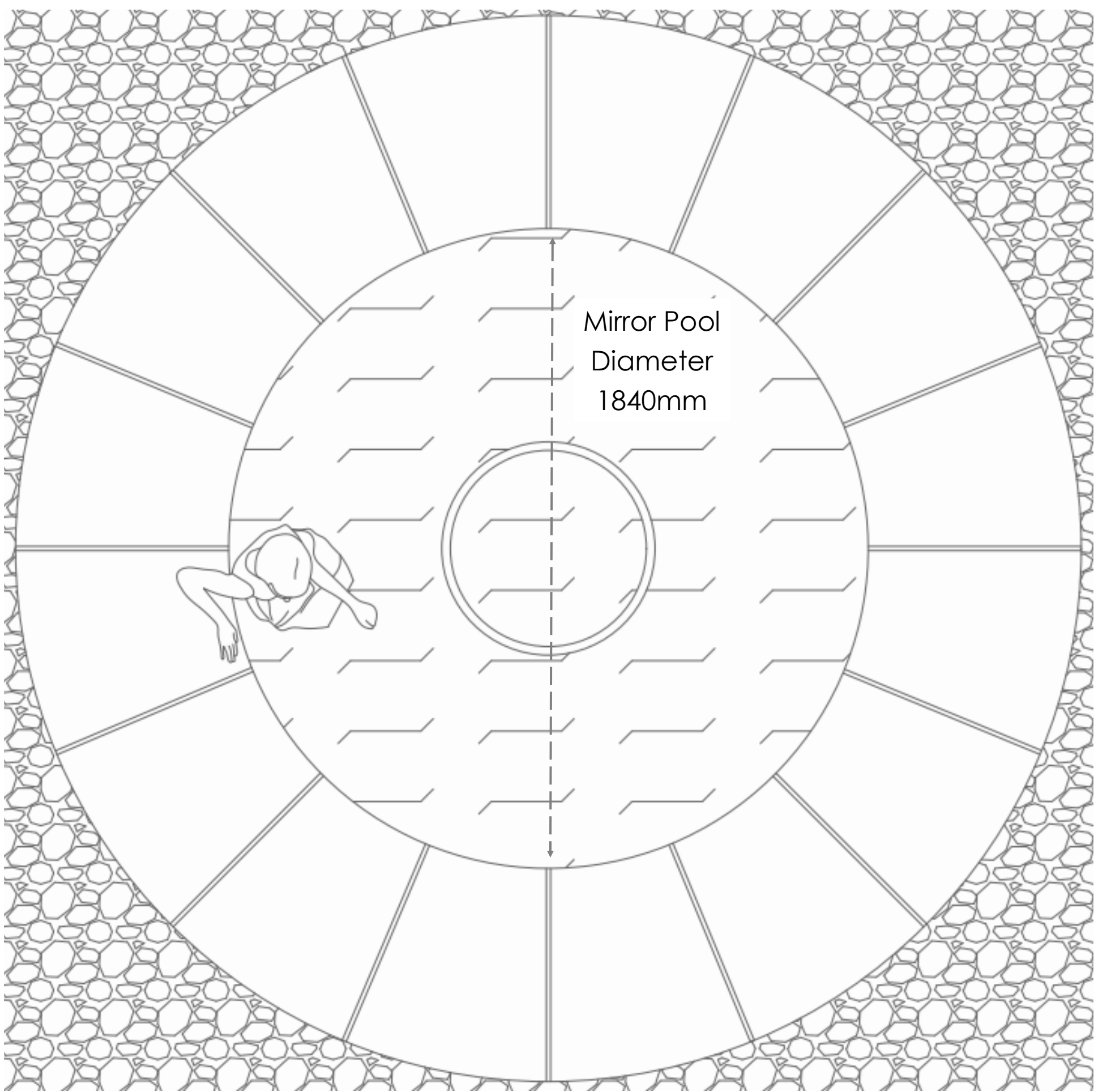


A tragic story with a plethora of themes and emotions. Taking the theme of imaginary gardens, we took this story and created an experience. Walking through our garden you see the **encounter** of the two lovers; the **infatuation** they both had for one another and their hidden love; the **doubt** that lingers on the man once he hears rumours of her dishonesty; his quick act of **anger** toward her; and the guilt and **regret** that dawns on him once he realises his mistake. All of this leads to the **reflection** garden, a place to recollect your thoughts on the experience you undergone, a moment of calm.

## Masterplan

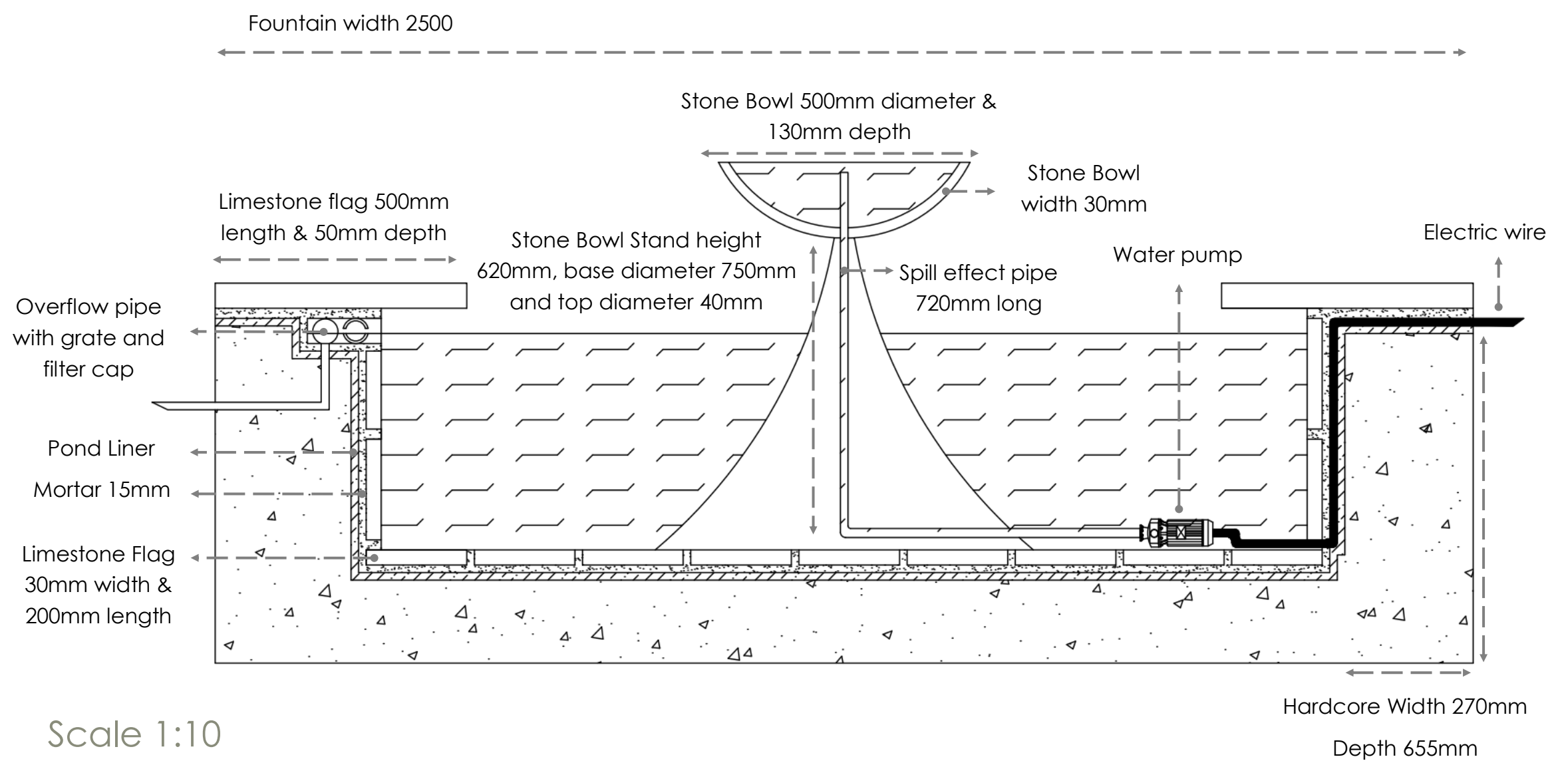


# Construction Details



## Fountain Detail

The spill effect fountain will be constructed from stone, situated in the center of a mirror pool. The beautiful stone stature of the woman will sit within the pool resting her arm and head on the encompassing limestone flags.

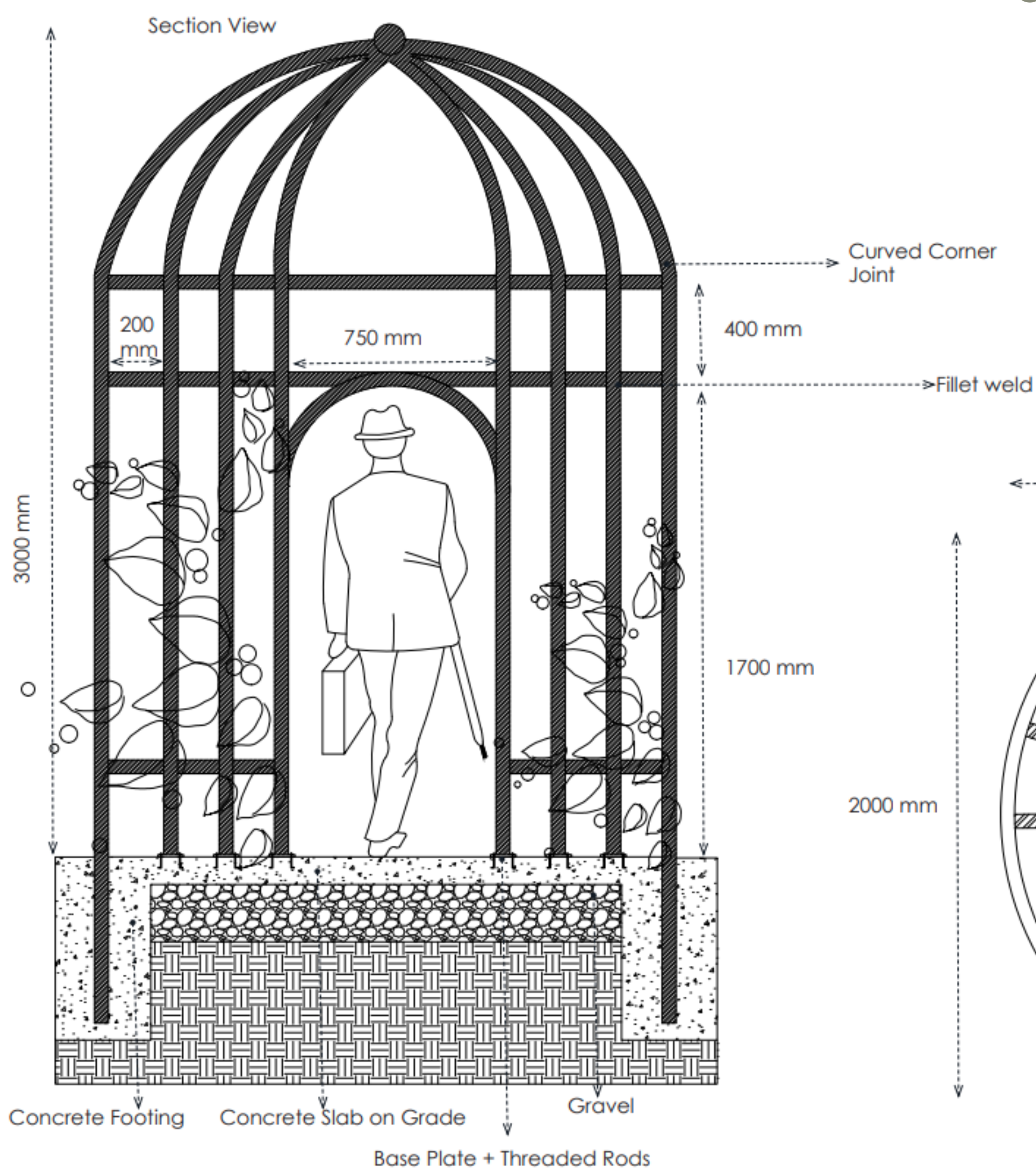


Materials:



## Gazebo Detail

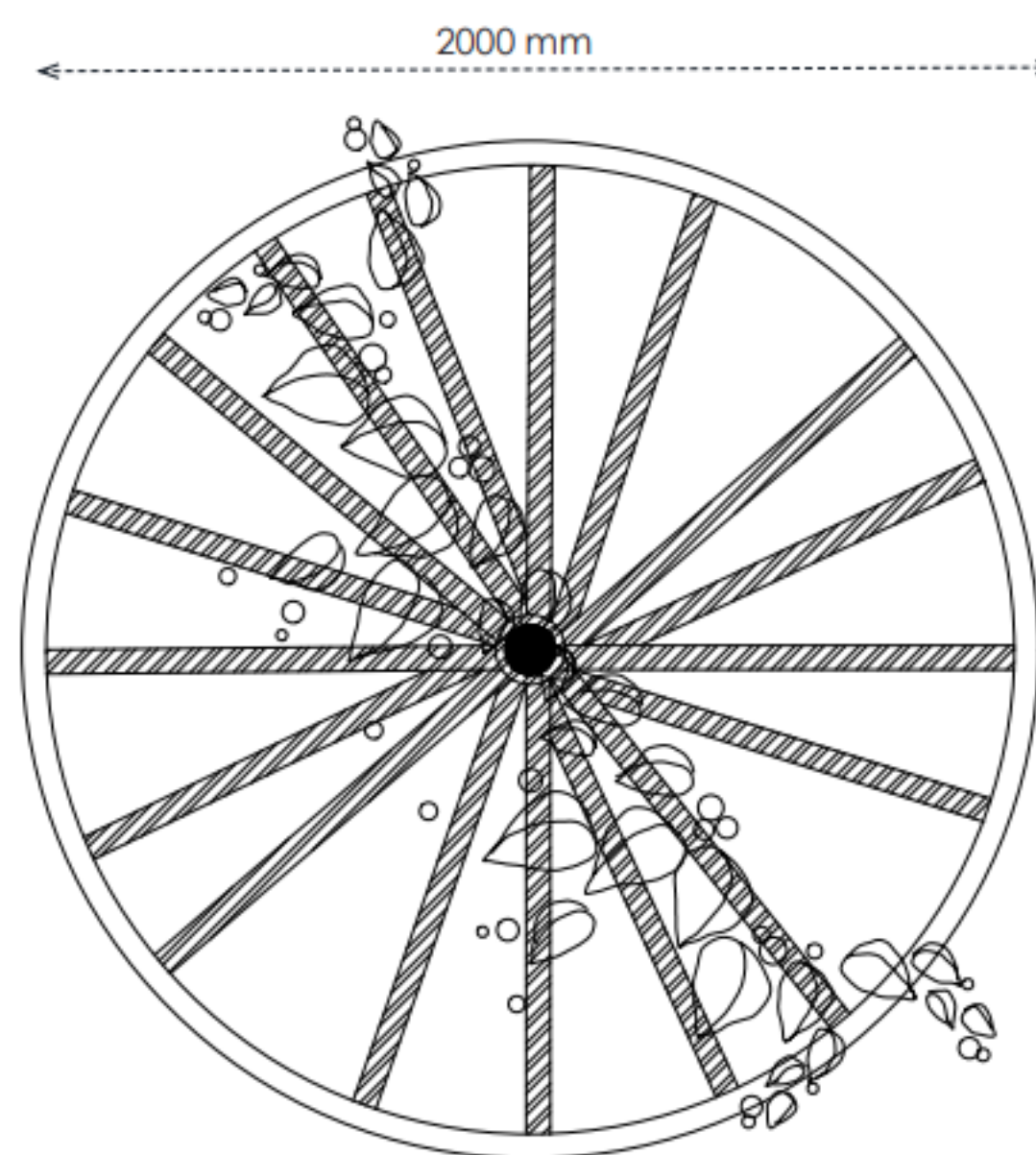
Scale 1:15



Notes

1. All steel used are circular hollow 50 mm width
2. All curved steel are corner joint
3. All straight steel are fillet weld
4. All steel are painted in white

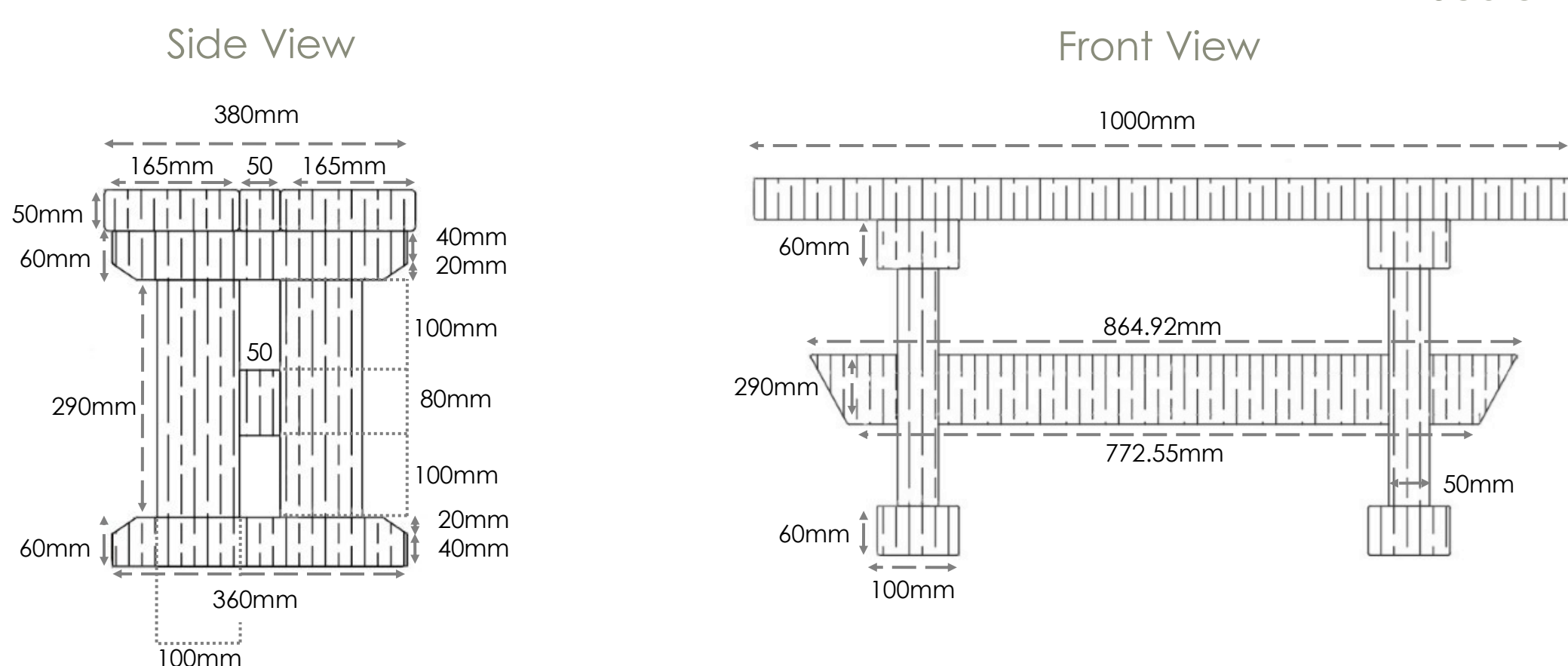
Plan View



The white steel cage creates a romantic enclosure with climbers twisting around the bars, concealing the space within. Two doorways allow for visitors to walk through the gazebo via stepping stones enveloped by planting.

## Bench Detail

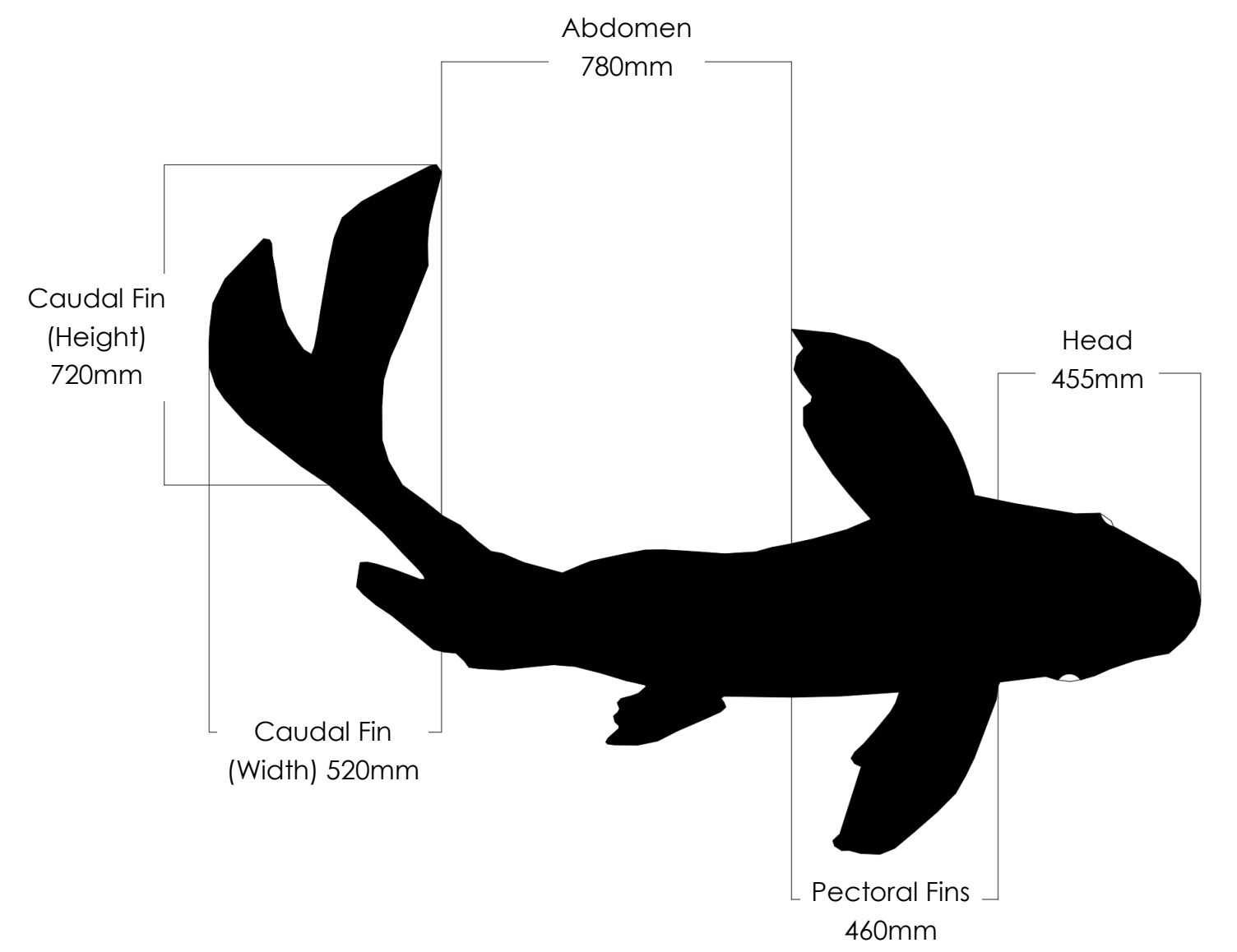
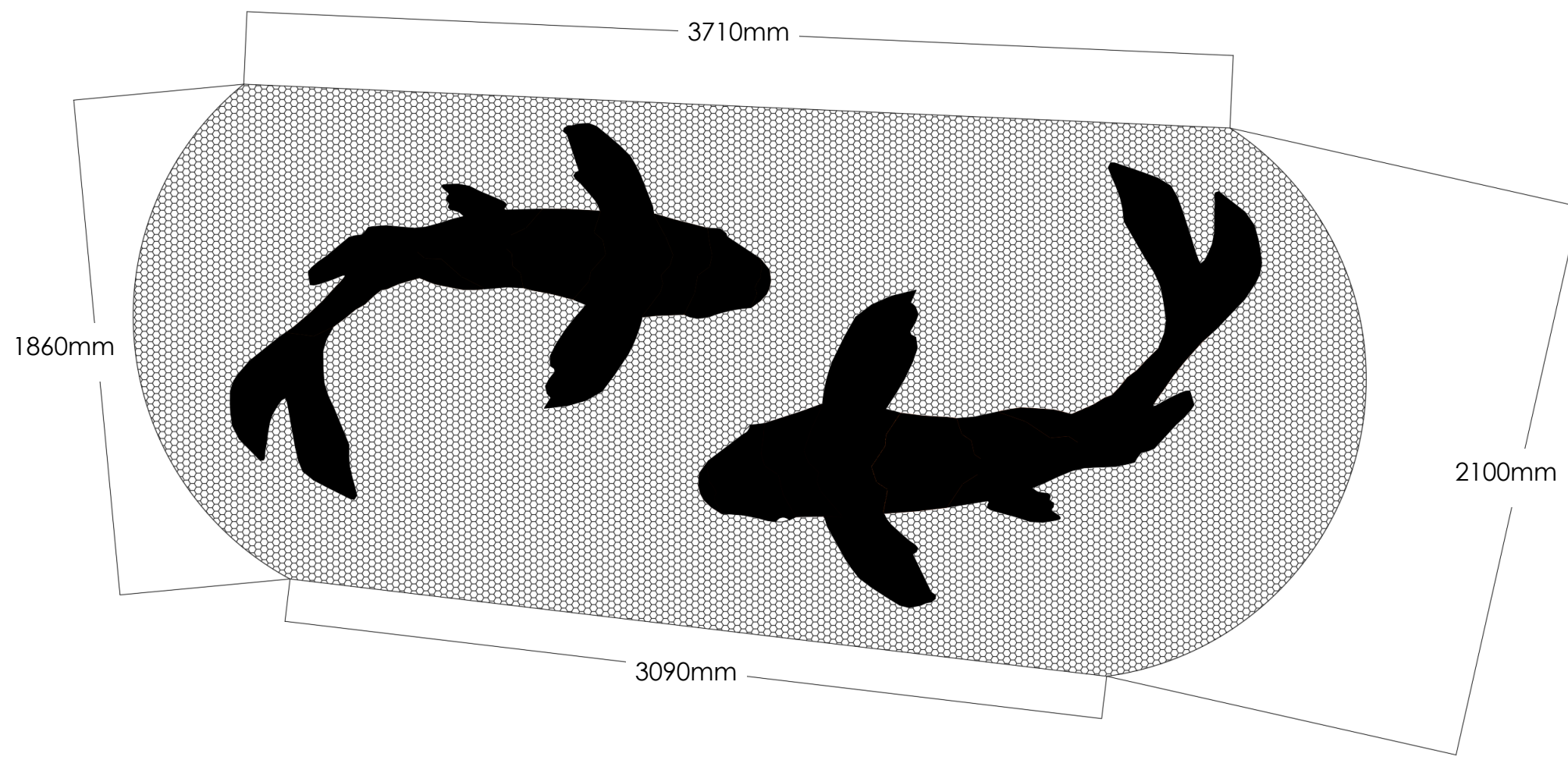
Scale 1:10



Minimal cedar wood benches are placed within the garden and situated to face towards the main focal point - the fountain. The wooden beam sticks through the trestles and is beveled on its ends holding it securely together.

## Mosaic Fish Paving

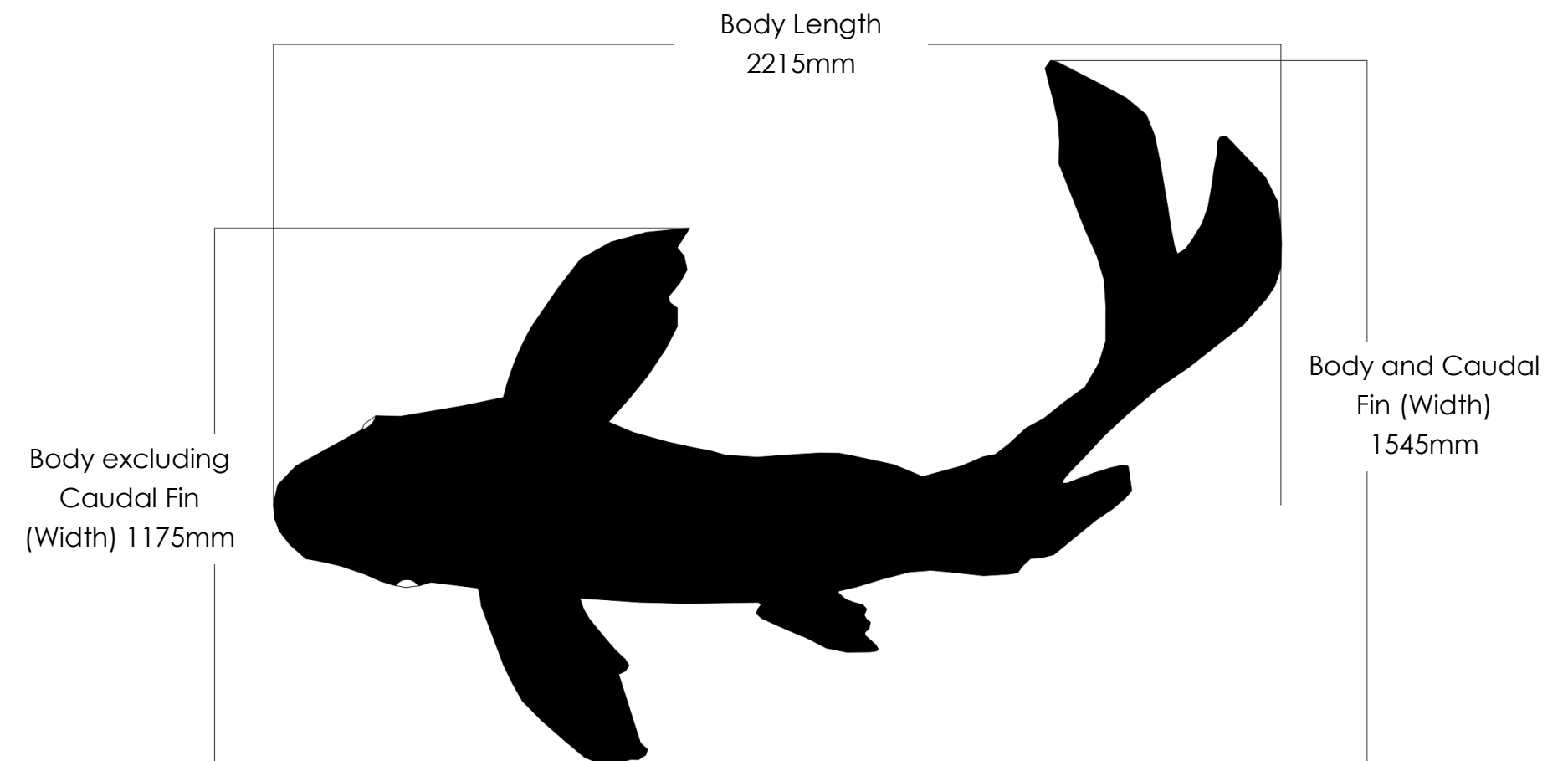
Scale 1:10



Constructed with tessera, the black and white mosaic tiles will be mounted in place and grouted onto the ground to be secured. The pattern illustrates two Koi fish swimming around one another to represent the two lovers, yet one of the fish has turned its head towards anger as doubt sets in.








Material:



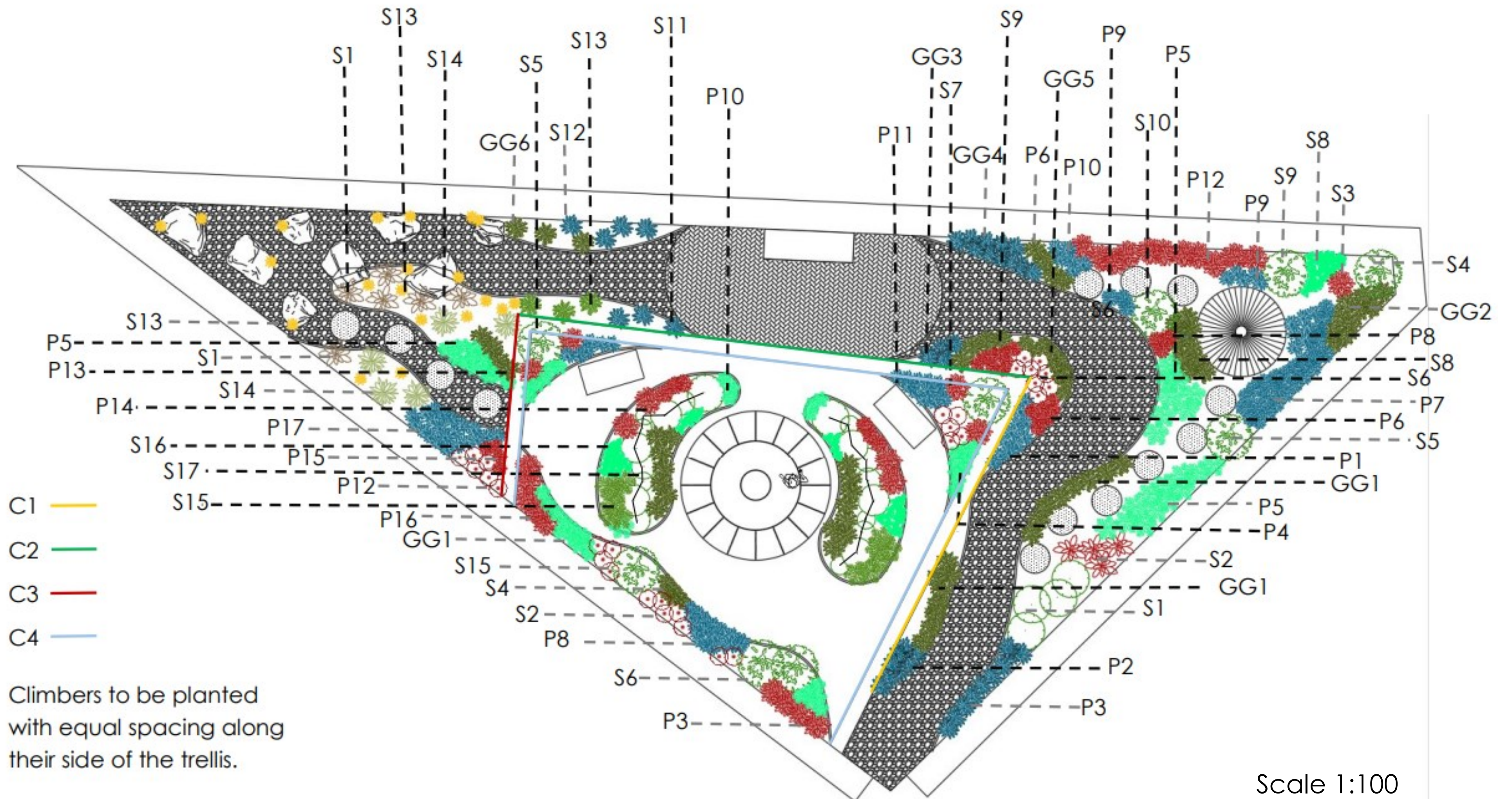
## Estimated Cost Plan

Material	Description	Estimated	Visual
Steel Gazebo	Romantic steel gazebo painted white.	€1500	
Spill Water Fountain	The water fountain will be constructed by stone, surrounded by a mirror pool lined with limestone flags.	€500	
Sculpture	The sculpture of a woman, composed of light coloured concrete with engravements will sit within the pool underneath the fountain. 500mm wide by 700mm tall.	€250	
Gravel	Three types of loose gravel will be used throughout the garden (cream, brown/orange & white) changing as the visitors walks around.	€2000	
Bench	Three simple wooden benches will be placed within the garden. And would preferable be constructed of cedar wood.	€150 per bench €450	
Mosaic	The mosaic fish design will be made of broken tessera tiles and placed in the form of the two fish.	€700	

Material	Description	Estimated	Visual
Stepping Stones	Smooth limestone stones will be placed both within planting and gravel within the garden design.	€250	
Glass Shards	Bespoke glass shards integrated into the regret planting scheme add vertical interest and evoke the feeling of loss.	€50 each €500	
Feature Stones	Scattered through the anger area, jagged sand stone feature stones force visitors to work their way through the space creating an uncomfortable environment.	€500	
Diverse Planting	A diverse planting scheme creates year round interest and reflect on each of the six environments.	€2800	
Fence	The white lattice fence will sperate the areas within the garden and encourage visitors to walk in the intended direction. Climbers will be planted along the bottom to create vertical interest and conceal the final stage.	€500	
<b>Estimated Total Cost:</b>		<b>€9,950</b>	

# Planting Plan

The selected plants have been chosen to represent and evoke the emotion of each area in terms of colour, texture, form and seasonality.



	Symbol	Species	Common name	Size H - S (m)	Pot Size (L)	Estimated plant cost (€)	Number of Plants	Total Cost Estimation (€)
<b>Shrubs</b>								
	S1	Chaenomeles x superba 'Crimson and Gold'	Japanese Quince 'Crimson and Gold'	1.5 - 2.5	3	15	10	150
	S2	Lavandula dentata	French Lavender	1 - 1.5	3	10	10	100
	S3	Spiraea nipponica	Tosa spiraea	2.5 - 2.5	3	10	2	20
	S4	arbutus unedo	Tree strawberries	4 - 4.5	3	20	2	40
	S5	Ceanothus 'Puget Blue'	Californian lilac 'Puget Blue'	2.5 - 2.5	3	8	2	16
	S6	Forsythia x intermedia 'Lynwood Variety'	forsythia 'Lynwood variety'	2.5 - 2.5	3	10	8	80
	S7	Rosa Getrude Jekyll	Rose 'Gertrude Jekyll'	1.5 - 1	3	10	4	40
	S8	Rosa arvensis	Field rose	4 - 2.5	3	10	6	60
	S9	Berberis thunbergii f. atropurpurea 'Rose glow'	Japanese barberry 'Rose glow'	1.5 - 1.5	3	10	5	50
	S10	Salvia fulgens	Mexican Scarlet sage	1.0 - 1.0	3	8	2	16
	S11	Acer palmatum 'Black Lace'	Japanese maple 'Black Lace'	4.0 - 4.0	3	25	3	75
	S12	Sambucus nigra	elder plant	4.0 - 4.0	3	20	4	80
	S13	Euphorbia milii	Crown of Thorns	2.0 - 1.0	3	8	23	184
	S14	Berberis thunbergii f. atropurpurea 'Concorde'	Japanese barberry 'Concorde'	1.0 - 1.0	3	10	5	50
	S15	Phlomis fruticosa	Jerusalem sage	1.0 - 1.5	3	10	13	130
	S16	Berberis darwinii	Darwin's barberry	2.5 - 2.5	3	10	6	60
	S17	Hydrangea paniculata 'Big Ben'	Hydrangea paniculata 'Big Ben'	1.5 - 2.0	3	10	16	160
<b>Perennials/Annuals</b>								
	P1	Phlox paniculata	Phlox paniculata	1.5 - 1	1	8	7	56
	P2	Agapanthus 'africanus blue'	Agapanthus 'africanus blue'	1.5 - 1	2	10	6	60
	P3	Agapanthus 'artic star'	Agapanthus 'artic star'	1.5 - 1	2	10	8	80
	P4	Acis autumnalis	Autumn Snowflake	0.5 - 0.1	1	5	6	30
	P5	campanula carpatica	campanula carpatica	0.5 - 0.5	1	5	15	75
	P6	Paeonia lactiflora 'Monsieur jules Elie'	Peony	1.0 - 1.0	1	8	7	56
	P7	Lysimachia clethroides	Gooseneck loosestrife	1.0 - 1.0	1	8	8	64
	P8	Campanula glomerata ' Freya'	Campanula glomerata ' Freya'	0.5 - 0.5	1	5	5	25
	P9	Dianthus alpinus	alpine pink	1.0 - 1.5	1	8	8	64
	P10	Dryopteris wallichiana	alpine wood fern	1.0 - 1.5	1	8	9	72
	P11	Hedychium densiflorum	Dense ginger lily	1.5 - 1.5	1	8	12	96
	P12	Salvia nemorosa 'Pusztaflamme'	Balkan Clary ' Pusztaflamme	1.0 - 1.0	1	8	15	120
	P13	Achillea millefolium 'Lansdorferglut'	yarrow 'Lansdorferglut;	0.5 - 0.5	1	5	5	25
	P14	Dahlia 'Black Jack'	Dahlia 'Black Jack'	0.5 - 1	1	5	8	40
	P15	Begonia 'Black Raspberry'	Begonia 'Black Raspberry'	1.0 - 1.5	1	5	4	20
	P16	Helianthus 'Lemon Queen'	Sunflower 'Lemon Queen'	2.5 - 1.0	1	10	5	50
	P17	Phlox paniculata 'Prince of Orange'	Phlox 'Prince of orange'	1.5 - 1	1	8	8	64
<b>Ground Cover/Grasses</b>								
	GG1	Calamagrostis x acustiflora 'Karl foerster	Calamagrostis x acustiflora 'Karl foerster	1.5 - 1	2	5	18	90
	GG2	Miscanthus sinensis ' Silberfeder'	Miscanthus sinensis ' Silberfeder'	0.1 - 0.1	2	5	6	30
	GG3	Carex remota	Carex remota	0.5 - 0.5	1	5	5	25
	GG4	Hosta 'Abiqua Ground Cover'	Hosta 'Abiqua Ground Cover'	1.0 - 1.0	2	5	6	30
	GG5	Crocsmia 'Pride of Plantation'	Crocsmia 'Pride of Plantation'	1 - 0.5	1	5	6	25
	GG6	Ophiopogon planiscapus Black Beard	Mondo grass 'Black Beard'	0.5 - 1	1	5	4	20
<b>Climbers</b>								
	C1	Lonicera x tellmanniana	Tellmann's honeysuckle	4.0 - 1.0	3	10	10	100
	C2	Hydrangea viburnoides	Climbing hydrangea	8.0 - 1.5	3	10	8	80
	C3	Lonicera periclymenum 'Serotina'	Late Dutch honeysuckle	8.0 - 1.5	3	10	5	50
	C4	Jasminum officinale	Common Jasmine	8.0 - 2.5	3	8	12	96
<b>Total:</b>							<b>324</b>	<b>2854</b>