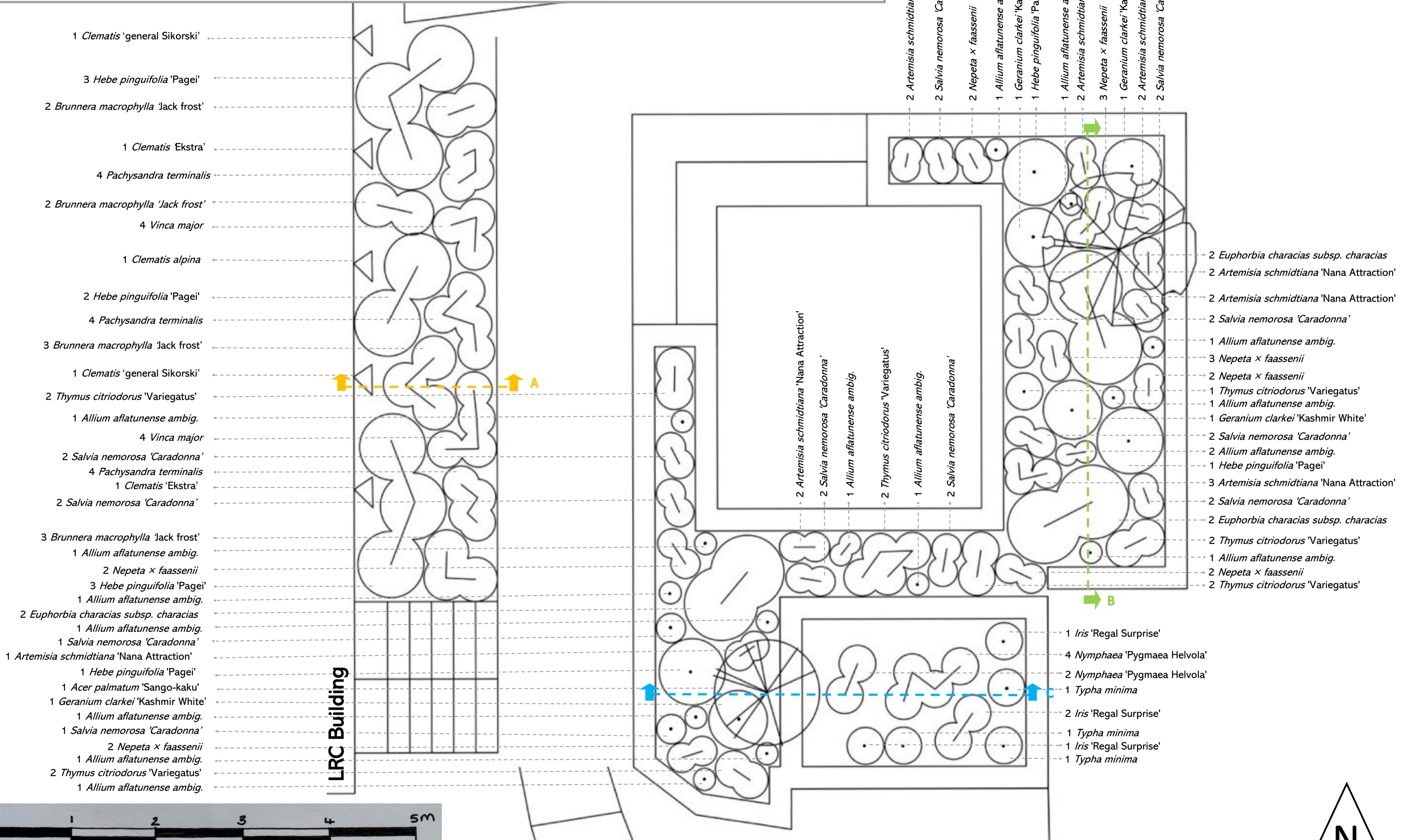


LA406 - LRC Planting Proposal

Georgie Templeton

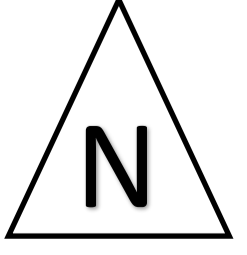
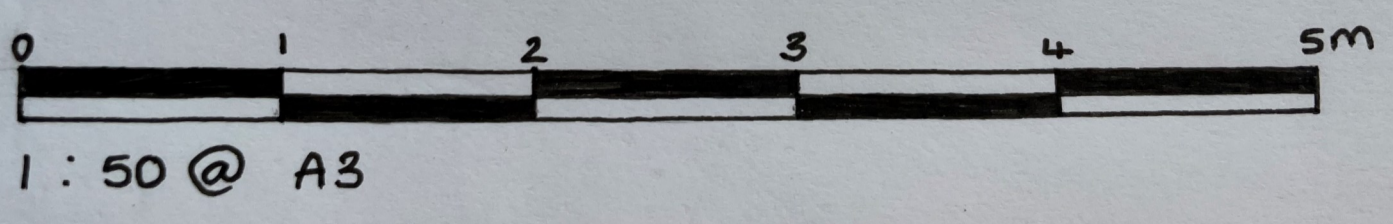
The planting design proposed is an informal design with cool blue-purple tones, creating a relaxing teaching environment. The plants used are well suited to the sites environmental conditions such as loamy soil, full sun/partial sun and sheltered location.



- 1 *Clematis* 'general Sikorski'
- 3 *Hebe pinguifolia* 'Pagei'
- 2 *Brunnera macrophylla* 'Jack frost'
- 1 *Clematis* Ekstra'
- 4 *Pachysandra terminalis*
- 2 *Brunnera macrophylla* 'Jack frost'
- 4 *Vinca major*
- 1 *Clematis alpina*
- 2 *Hebe pinguifolia* 'Pagei'
- 4 *Pachysandra terminalis*
- 3 *Brunnera macrophylla* 'Jack frost'
- 1 *Clematis* 'general Sikorski'
- 2 *Thymus citriodorus* 'Variegatus'
- 1 *Allium aflatunense* ambig.
- 4 *Vinca major*
- 2 *Salvia nemorosa* 'Caradonna'
- 4 *Pachysandra terminalis*
- 1 *Clematis* 'Ekstra'
- 2 *Salvia nemorosa* 'Caradonna'
- 3 *Brunnera macrophylla* 'Jack frost'
- 1 *Allium aflatunense* ambig.
- 2 *Nepeta x faassenii*
- 3 *Hebe pinguifolia* 'Pagei'
- 1 *Allium aflatunense* ambig.
- 2 *Euphorbia characias* subsp. *characias*
- 1 *Allium aflatunense* ambig.
- 1 *Salvia nemorosa* 'Caradonna'
- 1 *Artemisia schmidtiana* 'Nana Attraction'
- 1 *Hebe pinguifolia* 'Pagei'
- 1 *Acer palmatum* 'Sango-kaku'
- 1 *Geranium clarkei* 'Kashmir White'
- 1 *Allium aflatunense* ambig.
- 1 *Salvia nemorosa* 'Caradonna'
- 2 *Nepeta x faassenii*
- 1 *Allium aflatunense* ambig.
- 2 *Thymus citriodorus* 'Variegatus'
- 1 *Allium aflatunense* ambig.

- 2 *Artemisia schmidtiana* 'Nana Attraction'
- 2 *Salvia nemorosa* 'Caradonna'
- 2 *Nepeta x faassenii*
- 1 *Allium aflatunense* ambig.
- 1 *Geranium clarkei* 'Kashmir White'
- 1 *Hebe pinguifolia* 'Pagei'
- 1 *Allium aflatunense* ambig.
- 2 *Artemisia schmidtiana* 'Nana Attraction'
- 3 *Nepeta x faassenii*
- 1 *Geranium clarkei* 'Kashmir White'
- 2 *Artemisia schmidtiana* 'Nana Attraction'
- 2 *Salvia nemorosa* 'Caradonna'

- 2 *Euphorbia characias* subsp. *characias*
- 2 *Artemisia schmidtiana* 'Nana Attraction'
- 2 *Artemisia schmidtiana* 'Nana Attraction'
- 2 *Salvia nemorosa* 'Caradonna'
- 1 *Allium aflatunense* ambig.
- 3 *Nepeta x faassenii*
- 2 *Nepeta x faassenii*
- 1 *Thymus citriodorus* 'Variegatus'
- 1 *Allium aflatunense* ambig.
- 1 *Geranium clarkei* 'Kashmir White'
- 2 *Salvia nemorosa* 'Caradonna'
- 2 *Allium aflatunense* ambig.
- 1 *Hebe pinguifolia* 'Pagei'
- 3 *Artemisia schmidtiana* 'Nana Attraction'
- 2 *Salvia nemorosa* 'Caradonna'
- 2 *Euphorbia characias* subsp. *characias*
- 2 *Thymus citriodorus* 'Variegatus'
- 1 *Allium aflatunense* ambig.
- 2 *Nepeta x faassenii*
- 2 *Thymus citriodorus* 'Variegatus'
- 1 *Iris* 'Regal Surprise'
- 4 *Nymphaea* 'Pygmaea Helvola'
- 2 *Nymphaea* 'Pygmaea Helvola'
- 1 *Typha minima*
- 2 *Iris* 'Regal Surprise'
- 1 *Typha minima*
- 1 *Iris* 'Regal Surprise'
- 1 *Typha minima*





Section C

Within the pond the aquatic plants are kept within sunken baskets at different heights depending on the plants growing conditions.

The aquatics reinforce the colour scheme with white and purple flowers during the summer.

Next to the pond the striking *Acer palmatum* 'Sango Kaku' has bright red stems and yellow green leaves turning orange in autumn. The tree droops over the pond creating colourful reflections when the aquatic plants are not in bloom.

Name	Month											
	Jan	Feb	March	April	May	June	July	Aug	Sep	Oct	Nov	Dec
<i>Iris</i> 'Regal Surprise' (SpH)						✿	✿	✿				
<i>Nymphaea</i> 'Pygmaea Helvola'						✿	✿	✿				
<i>Typha minima</i>						✿	✿	✿				



Planting Schedule

Trees								
Number	Species	Common name	Size	Girth	Height	Clear Stem	Root	Pot size
1	<i>Acer palmatum</i> 'Sango-kaku'	Coral-bark Maple	Multi stem	3 trunks	2-3m	Fthd	Container	50L

Climbers								
Number	Species	Common Name	Size	Root	Pot size	Habit	Spacing	Density
2	<i>Clematis</i> 'general Sikorski'		900-1200mm	C	5L	well branched	1.5m	1/m2
1	<i>Clematis alpina</i>	Austrian Clematis	900-1200mm	C	5L	fixed on wires	1.5m	1/m2
2	<i>Clematis</i> 'Ekstra'		900-1200mm	C	5L	along building	1.5m	1/m2

Ornamental Shrub Planting								
Number	Species	Common name	Size (height)	Root	Pot Size	Habit	Spacing	Density
6	<i>Euphorbia characias subsp. characias</i>	Mediterranean spurge	500 - 1000mm	C	5L	Well filled pot	450mm	5/m2
11	<i>Hebe pinguifolia</i> 'Pagei'	Hebe 'Pagei'	100-500mm	C	5L	Well filled pot	450mm	5/m2
13	<i>Thymus citriodorus</i> 'Variegatus'	Thyme 'Golden King'	100-500mm	C	5L	Bushy	450mm	6/m2

Ground Cover								
Number	Species	Common name	Size	Root	Pot size	Habit	Spacing	Density
19	<i>Artemisia schmidtiana</i> 'Nana Attraction'	Schmidt wormwood 'Nana Attraction'	100mm	C	2L	Well filled pot	450mm	5/m2
10	<i>Brunnera macrophylla</i> 'Jack frost'	Siberian bugloss 'Jack Frost'	100-500mm	C	2L	Well filled pot	500mm	4/m2
4	<i>Geranium clarkei</i> 'Kashmir White'	cranesbill 'Kashmir White'	100-500mm	C	3L	Well filled pot	450mm	5/m2
15	<i>Nepeta x faassenii</i>	Garden catmint	100-500mm	C	2L	Bushy	500mm	4/m2
12	<i>Pachysandra terminalis</i>	Japanese spurge 'Green Carpet'	100-500mm	C	3L	Well filled pot	500mm	4/m2
18	<i>Salvia nemorosa</i> 'Caradonna'	Balkan clary 'Caradonna'	100-500mm	C	2L	Well filled pot	500mm	4/m2
7	<i>Vinca major</i>	Greater periwinkle	100-500mm	C	2L	Well filled pot	500mm	4/m2
6	<i>Nymphaea</i> 'Pygmaea Helvola'	Waterlily 'Pygmaea Helvola'	100mm	C Aquatic	2L	Submerged	500mm	4/m2
3	<i>Typha minima</i>		0.5-1m	C Aquatic	2L	Well filled pot	1m	1/m2
4	<i>Iris</i> 'Regal Surprise'		0.5-1m	BR Aquatic		Clumping AQU	1m	1/m2

Bulb planting within Ground Cover					
Number	Species	Common name	Size	Placement	Density
17	<i>Allium aflatunense</i> ambig.		0.5-1m	Plant informally in gaps between other plants	15-20/m2