

Inspiration



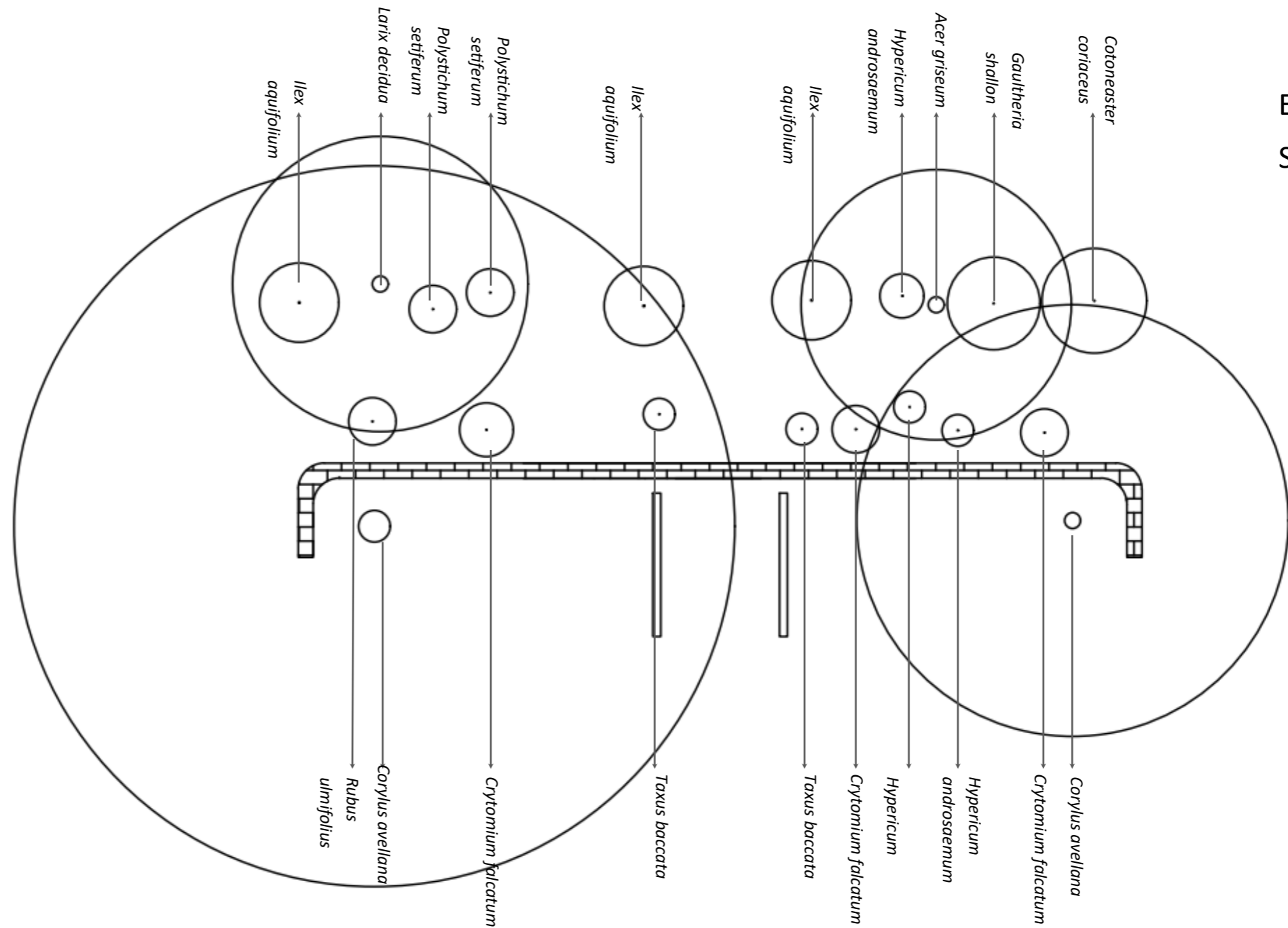
Peter Latz, designer of Duisburg Nord, inspired my Landscape Resource Centre (LRC) design through his thoughtful approach to an existing site. Latz approached Duisburg Nord with the aim to preserve the history and character of the iron industry by maintaining key components of the site or repurposing materials.



Existing Site



Existing Site
Scale 1:100



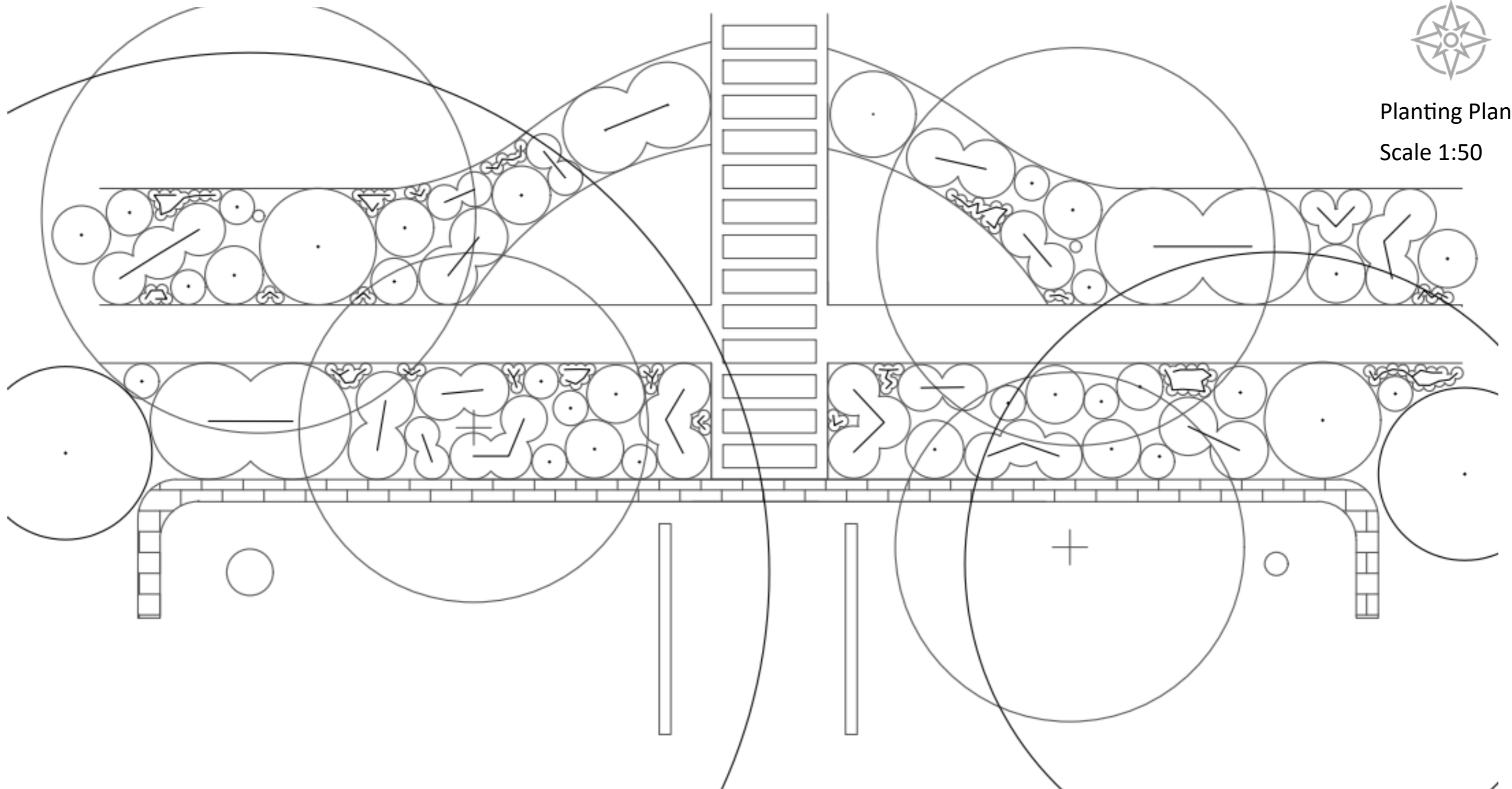
Opportunities	Constraints
Moon Gate is a centre piece and view point within the garden.	Northern planting hasn't been maintained, resulting in the shrubs growing tall and enclosing the area.
Surrounding trees are mature.	Pathways consist of dirt tracks.
Brick wall is still fairly sturdy.	Mature trees create a lot of shade.
Ivy covers a lot of the wall softening the hard materials.	Wall planting is low and has little variation in species and layers.

Soft Materials



Planting Plan

Scale 1:50



Acer palmatum
'Orange Dream'

Cornus angustata

Pachysandra
terminalis

Hosta
'Rainforest Sunrise'

Euphorbia
amygdaloides
'Purpurea'

Hebe 'Red Edge'

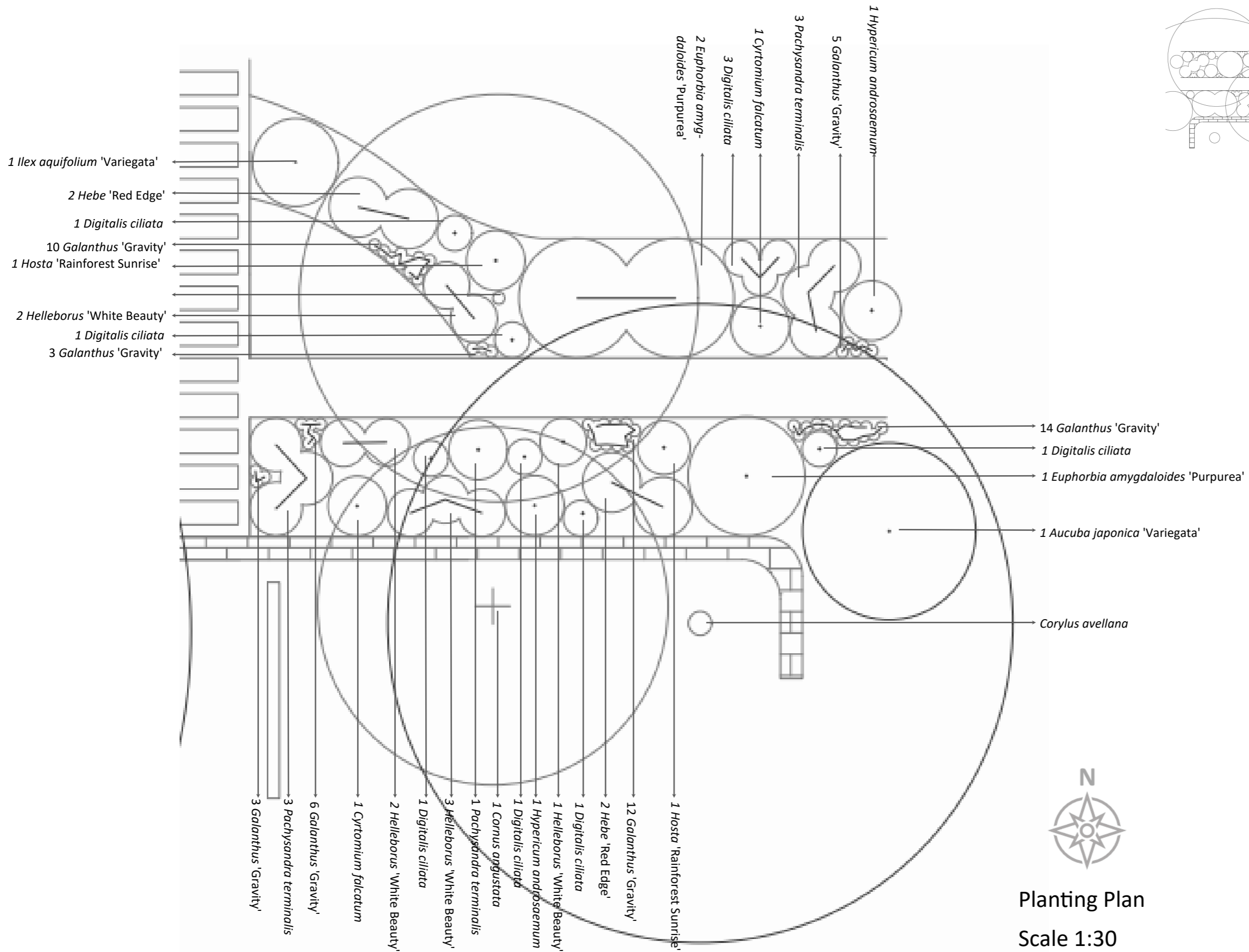
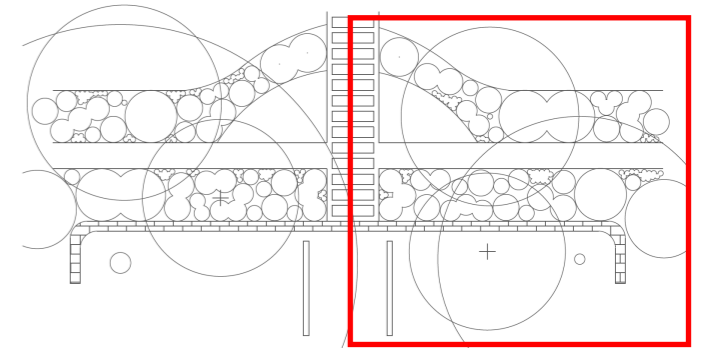
Acuba japonica
'Variegata'

Helleborus
'White Beauty'

Digitalis ciliata

Galanthus 'Gravity'

Planting Plan



Planting Plan
Scale 1:30

Planting Schedule

Trees								
Number	Species	Common Name	Size	Girth	Height	Clear Stem	Root	Pot Size
1	<i>Acer palmatum 'Orange Dream'</i>	Japanese maple 'Orange Dream'	Multi Stem	3 trunks	2-3m	Feathered	container	50L
1	<i>Cornus angustata</i>		Multi Stem	3 trunks	2-3m	feathered	container	50L

Ground cover								
Number	Species	Common Name	Size	Root	Pot size	Habit	Spacing	Density
9	<i>Pachysandra terminalis</i>	Japanese spurge 'Green Carpet'	100-500mm	Container	3L	Well filled pot	500mm	5/m2
7	<i>Hosta 'Rainforest Sunrise'</i>	Plantain lily 'Rainforest Sunrise'	100-500mm	Container	3L	Well filled pot	500mm	5/m2
4	<i>Cyrtomium falcatum</i>	House Holly Fern	100-500mm	Container	3L	Well filled pot	500mm	5/m2

Ornamental Shrub Planting								
Number	Species	Common Name	Size	Root	Pot Size	Habit	Spacing	Density
6	<i>Euphorbia amygdaloides 'Purpurea'</i>	Wood Spurge 'Purpurea'	500-1000mm	Container	5L	Well filled pot	450mm	5/m2
7	<i>Hebe 'Red Edge'</i>		100-500mm	Container	5L	Well filled pot	450mm	5/m2
2	<i>Acuba japonica 'Variegata'</i>	Variegated Japanese Laurel	500-750mm	Container	5L	Bushy	1000mm	1/m2
4	<i>Hypericum androsaemum</i>	Tutsan	100-500mm	Container	5L	Well filled pot	450mm	5/m2
3	<i>Ilex aquifolium 'Variegata'</i>	Variegated Holly	500-750mm	Container	5L	Bushy	1000mm	1/m2

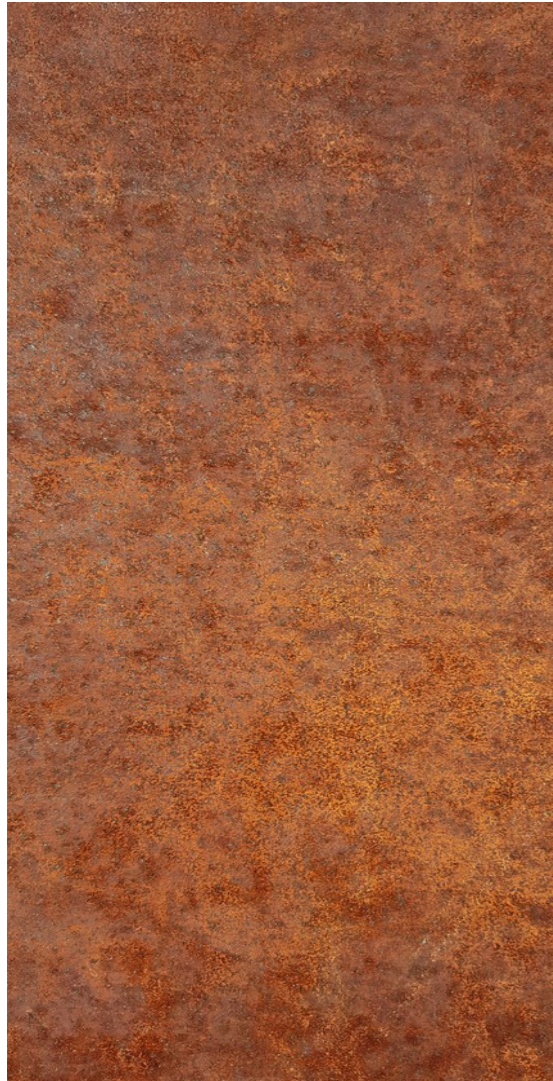
Perennials								
Number	Species	Common Name	Size	Root	Pot Size	Habit	Spacing	Density
13	<i>Helleborus 'White Beauty'</i>		100-500mm	Container	2L	Well filled pot	500mm	5/m2
21	<i>Digitalis ciliata</i>	Hairy Foxglove	100-500mm	Container	2L	Well filled pot	500mm	5/m2

Bulbs								
Number	Species	Common Name	Size	Placement	Density			
120	<i>Galanthus 'Gravity'</i>	Snowdrops 'Gravity'	100-200mm	Planted in groups where ground is sparse on the edge of the beds.	25/m2			

Maintenance Plan

Task	Frequency	Notes
Clean Benches	Monthly	Ensure benching and/or seating arrangements are well maintained removing any graffiti, bird faeces or rubbish.
Litter picking	Monthly	The site is not used regularly, but still must be inspected for litter once a month.
Inspections	Yearly	Check site for hazards, damages, cleanliness and uses.
Pressure washing stepping stones	Yearly	Retain the colour and texture of the Indian sand stone.
Rake Gravel	Monthly	Check for any gravel that may have escaped the pathway. Rake it back to retain the gravel for longer.
Weeding	Every six weeks from April to October	Remove any unwanted plants within the site.
Clear Leaves	Fortnightly through autumn and winter	Remove leaves from the gravel.
Water	When required	Only water plants through period of prolonged drought.
Pruning	Annually	Prune trees, shrubs and herbaceous plants to retain certain shapes and sizes. Complete when specific plant species are dormant.
Dead Head	Monthly from May to October	Dead head all flowering herbaceous plants to retain aesthetic and encourage plants to flower again throughout the season.
Divide Plants	Monthly in Autumn	Remove self seeded species or plants that are dominating the scheme to retain the planting design.

Hard materials



Corten Steel



Teak Wood



Gravel Mix



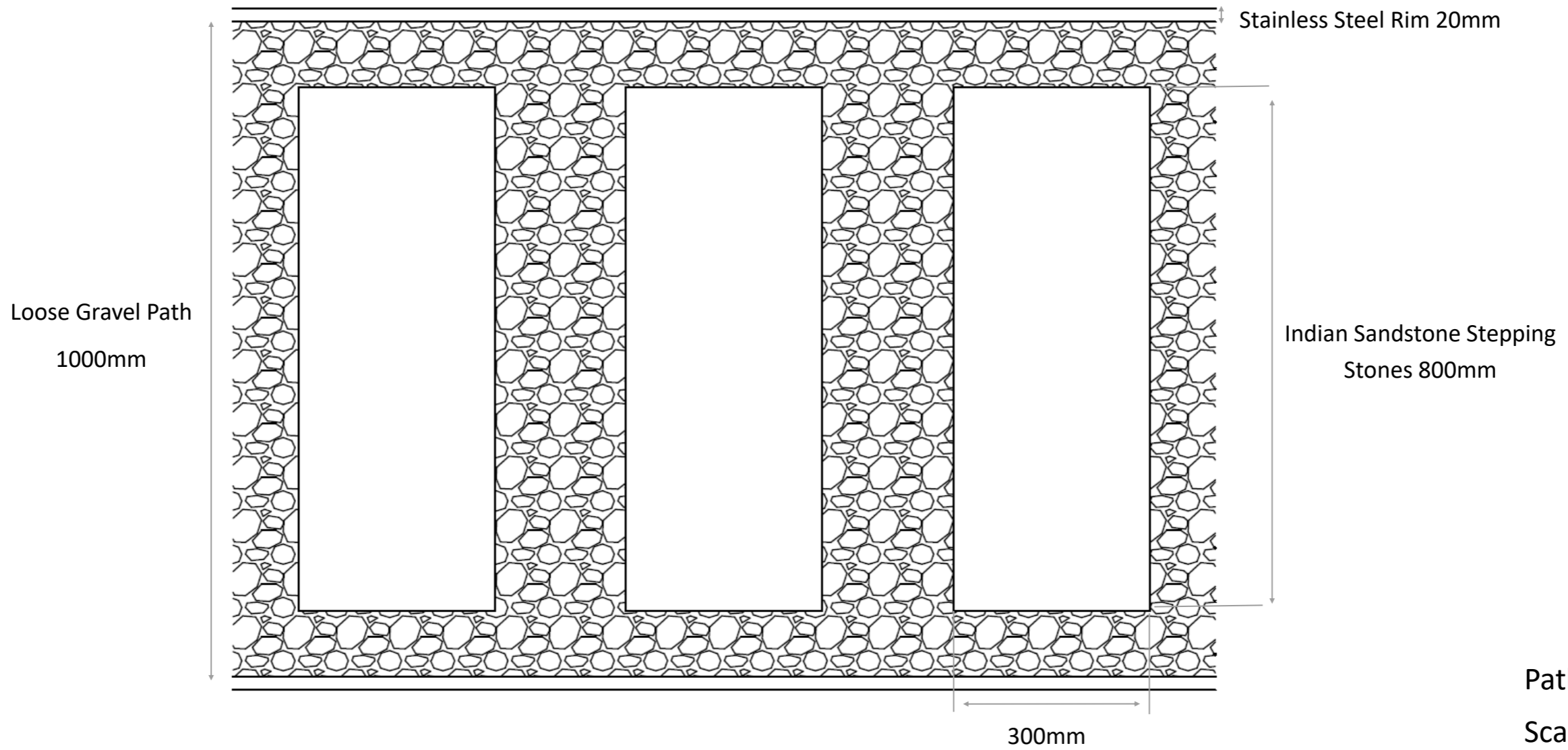
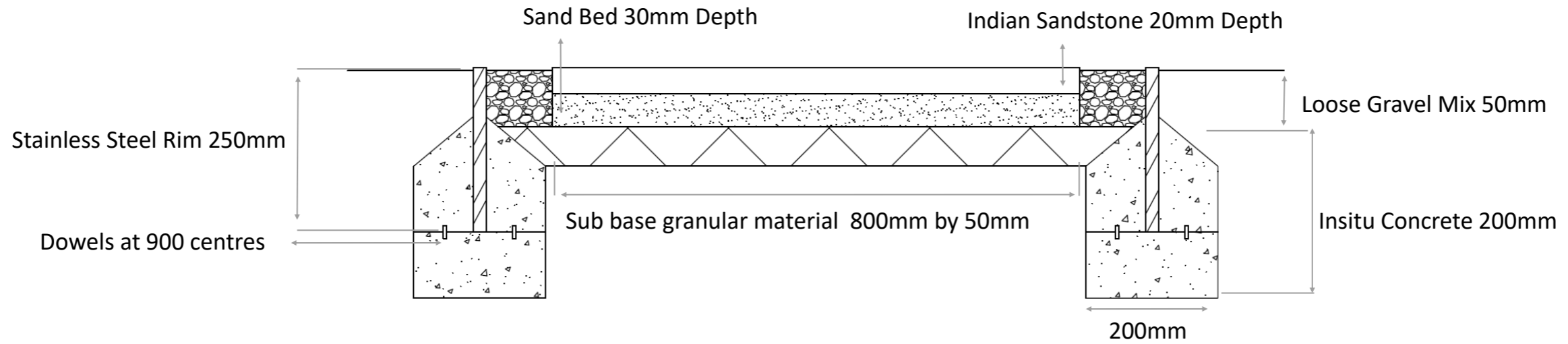
Polished Stainless Steel



Indian Sandstone

When approaching the hardscape I chose materials which would compliment the sites existing materials. The orange tones of the Corten steel, teak wood and Indian sandstone produce a sense of warmth and comfort within the space whilst creating a variety of patterns and textures. The Gravel mix is encompassed by the Stainless steel rim. I chose the gravel path with stepping stones to create a defined pathway through the site and draw your view up towards the moon gate.

Path Detailing

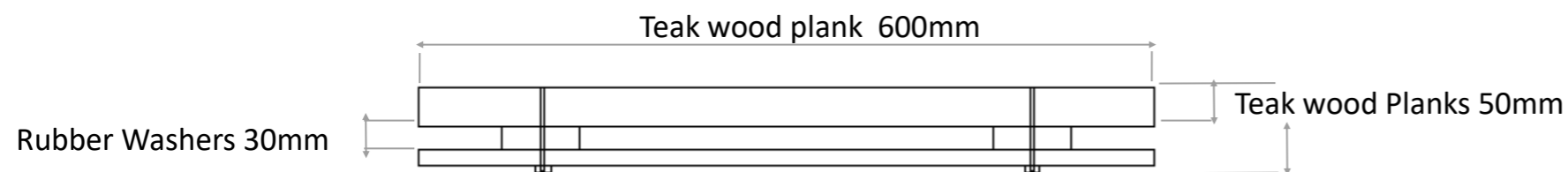
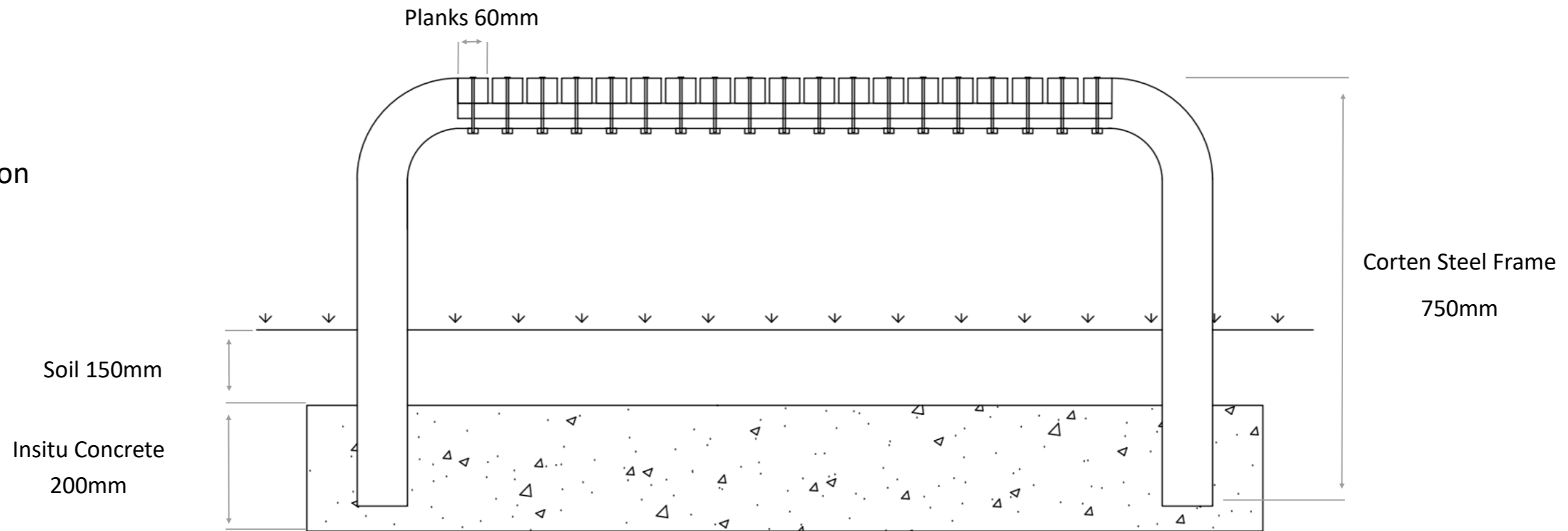


Path Construction
Scale 1:10

The mixed gravel path creates a different texture to the hardscape and is encompassed by the stainless steel rim. Indian sandstone stepping stones line the path and guides the users eye up towards the moon gate.

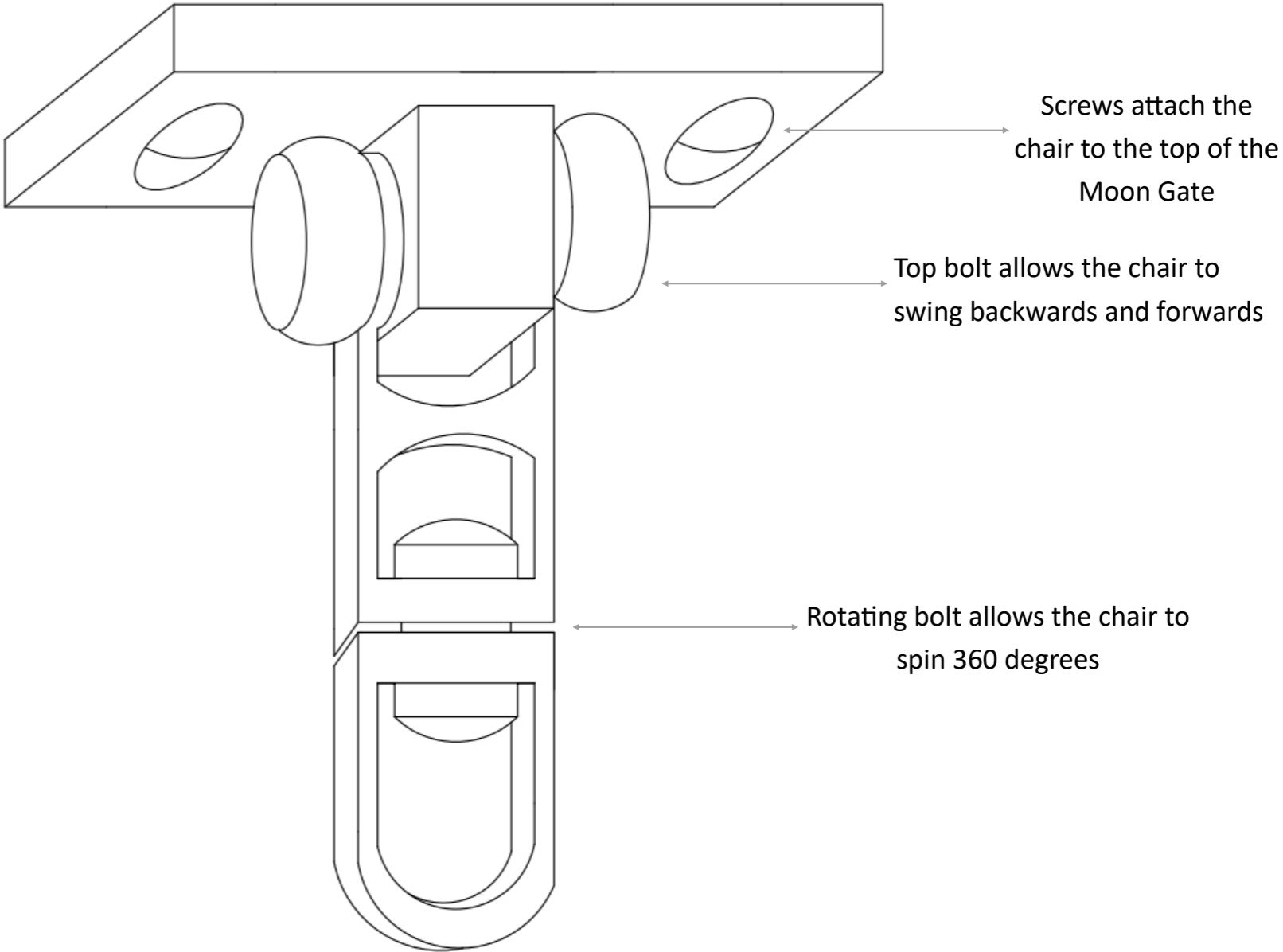
Bench Detailing

Bench
Construction
Scale 1:10



The Corten steel bench creates a rough texture in contrast to the smooth teak wood planks along the top. To prevent the wood rotting, rubber washers separate the planks from the bottom of corten steel and secured by screws. As a result water is able to drain from between the planks increases the durability of the wood. The legs of the bench are secured by concrete underground to stop the heavy structure from sinking into the ground when moist in winter.

Rotating Bolt Detailing



The bolt design allows the swing chair to move forwards and backwards and sing 360 degrees, but restricts it from swinging from side to side as it would crash into and potentially damage the existing moon gate around it. The swing chair will be constructed from teak wood due to its durability and painted with a varnish to intensify the warm brown tones.

Sketch up Detailing

