

# Walton Park Reimagined

Design Aims



Materials



Connectivity



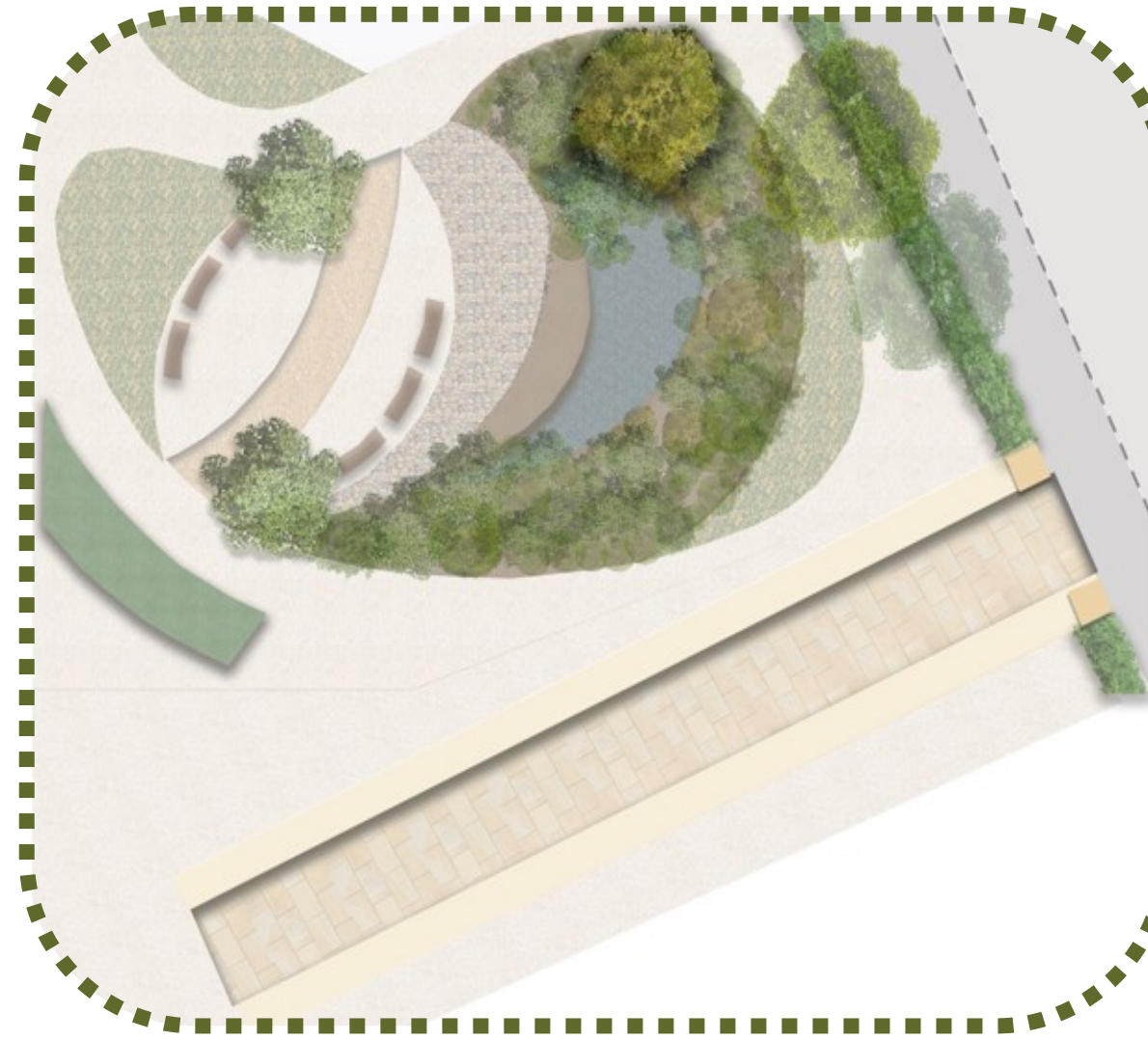
Play

## Masterplan: Design One



Scale 1:300  
0 4 8 12 16 20 24 28 32 36 40 m

## Zone 1 - Rain Garden



Zone 1 includes a ramp and a rain garden. The ramp was made to make the site accessible and inclusive for all. The rain garden was made to promote biodiversity and increase wildlife within the park.

The ramp is made of sandstone brick and is paved with sandstone to match with existing entrance, relate to the surroundings and tie the design together neatly through coherence. It has insect hotels attached to its sides, which local schools can design to promote biodiversity and community involvement.

The rain garden was changed from a pond due to safety concerns addressed during the community engagement. A rain garden is to be put in its place which still holds the same ecological value whilst not causing concerns parents and residents. A rain garden includes unique, diverse planting and a small area which puddles with water, only when it rains.



## Zone 2 - Natural Play Area



This section of the design aims to connect the existing play area to the new design. It features earth mounds built from reused onsite materials, with tunnels constructed through them to create an exciting play space for children.

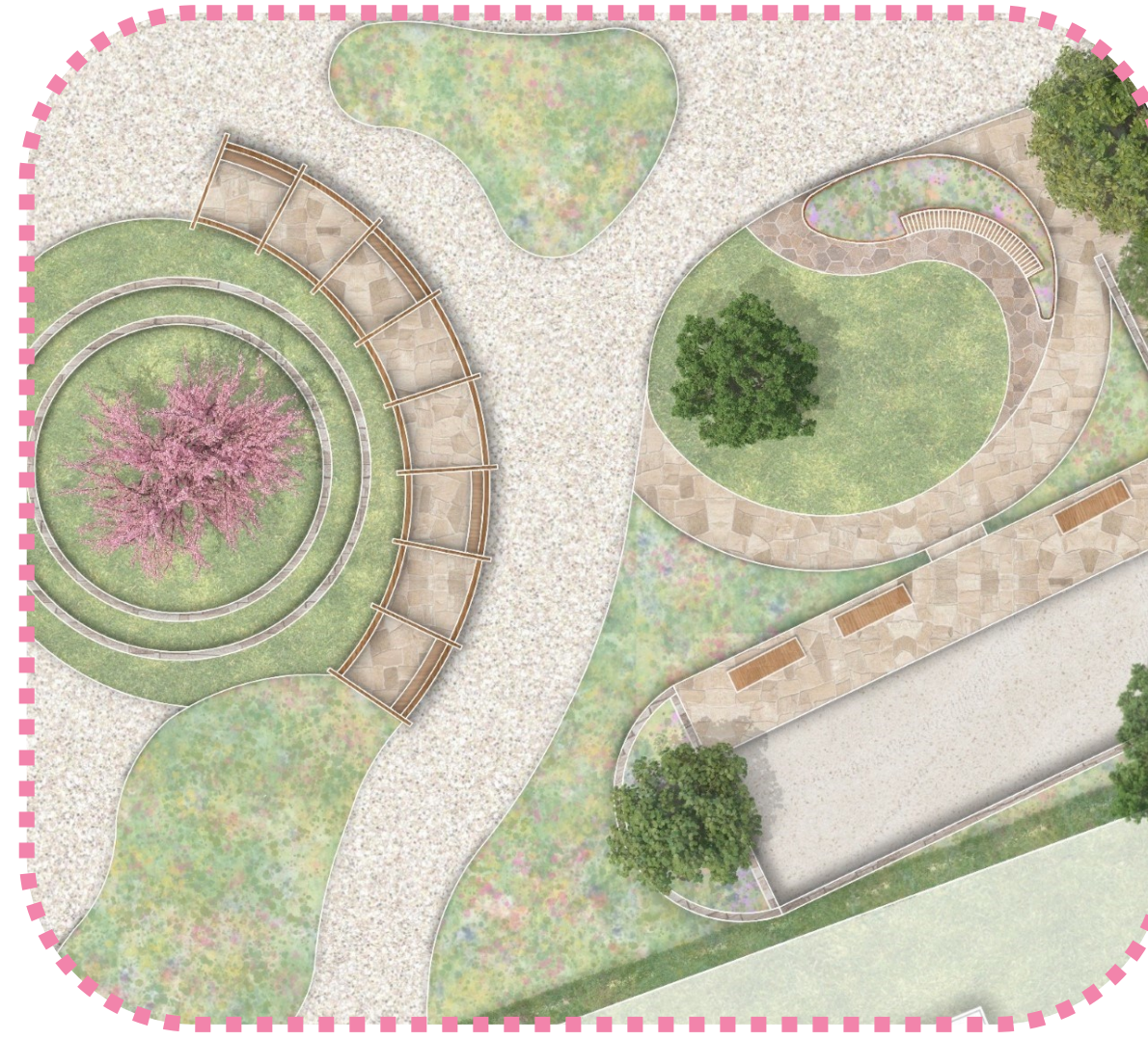
The planted area features a mix of herbaceous, shrub and grass planting which is all child friendly. The stepping stones through this area invites site users to feel immersed within the planting.

A smaller arch is connected to the larger Corten steel archways to further connect the space and to create a sense of enclosure as well as framing the colourful planting.

A curved timber bench is fixed to the archways to welcome the site users to relax and take in their surroundings.



## Zone 3 - Pétanque court



Zone 3 includes an oasis and retreat in the submerged gathering area with a central cherry tree that blooms in the spring. When combined with the corten steel benches, the varnished teak wood pagoda around the circular area creates a peaceful atmosphere.

The Pétanque court is composed of dry sandstone walls and paving slabs, surrounded by ornamental planting. Bespoke curved corten steel benches frame the space and provide seating for game players or spectators.

An organic shaped grass lawn is encircled by a corten steel bench planter, which provides views of the surrounding park and pétanque court.



## Zone 4 - Patio and Cafe



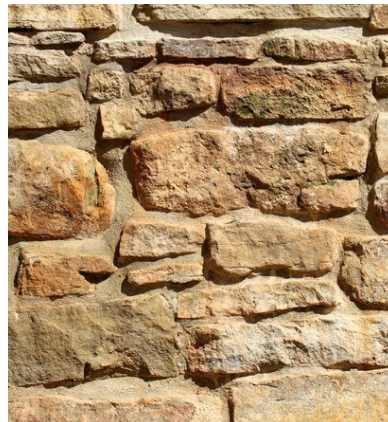
Shows exploration through soft grasses and shrubbery, with a theme of purple and whites with contrast from the black mondo throughout site. Creating sensory focused zones for all ages winding along each zone.

New corten steel band acting as entrance point to connecting football fields on site, this creates cohesion and a new sense of individuality with this hardscape feature throughout site. Also showing outdoor seating with the pergola and roof top hanging plants connecting to the soft flowing grasses on ground level.

Overview of all site showing connectivity with all materials ranging from warm colour palettes to corten features of the site. All ages can happily engage with fun activities whilst gaining positive impacts.



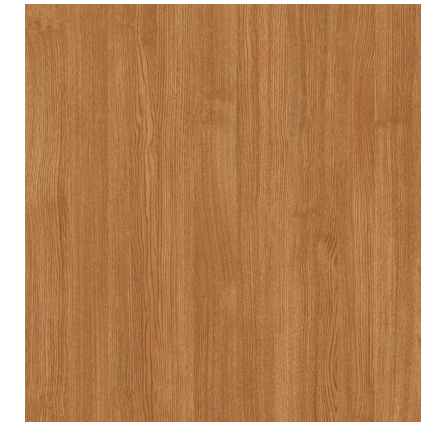
## Material Palette



Dry Sandstone Walls



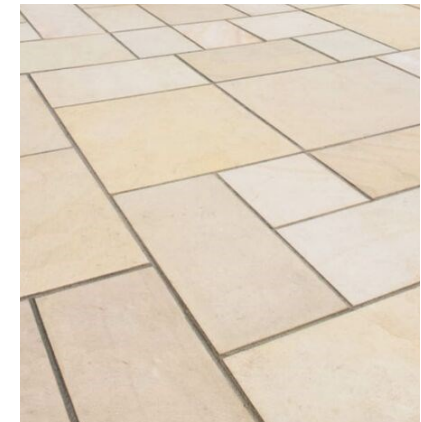
Corten Steel



Varnished Teak Wood

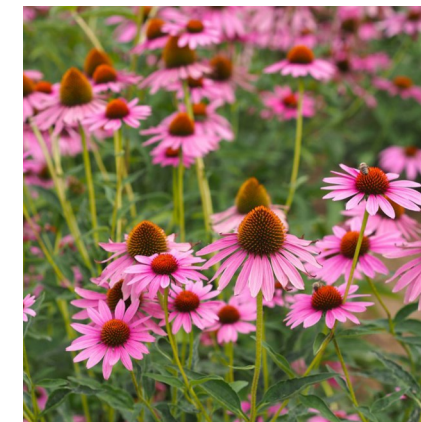


CEDEC Golden Gravel



Sandstone Flag Paving

## Planting Palette



Echinacea purpurea



Molinia caerulea



Astrantia roma



Achillea millefolium 'Terracotta'



Salvia nemorosa