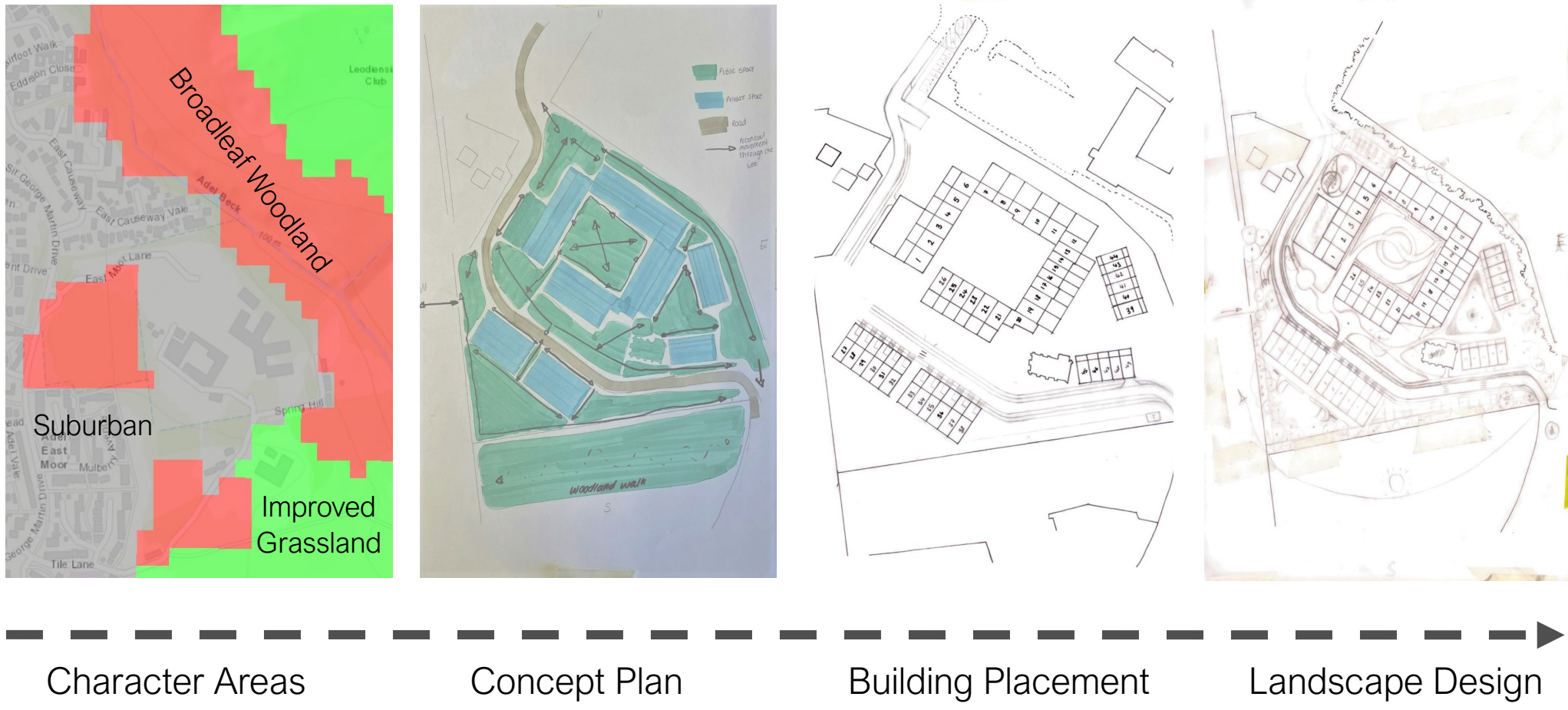


# A Green Community

A Green Community seeks to create a strong social and sustainable community through designing a green housing development immersed into the landscape of Adel. A variety of housing with solar panels caters for people of all ages allowing a diverse community to form. Local Shops and cafes support residents through selling home grown vegetables and fruit from the allotments along with local farmers produce. Drainage is managed through permeable paving and swales with planting schemes which soften the hardscape. The woodland walk connects to surrounding PROW developing connections with the surrounding area.

## Design Process



## Aims and Objectives:

- To create a strong cohesive community.
- Improve biodiversity and retain habitats for wildlife.
- Develop sustainable water management through drainage methods.
- Improve movement routes through the site for all abilities.
- Encourage own food production initiatives.
- To use sustainable energy sources.



Quadrangle courtyard with soft scaping and pond to create a beautiful open space for residents to share.

## Mood board



## Master Plan



## Key:

- 1 - Underground Car Park
- 2 - Allotments
- 3 - Play Ground
- 4 - Community Café and Nursery
- 5 - Green Walk Way
- 6 - Courtyard
- 7 - Local shop
- 8 - Gazebo and Open green space
- 9 - Sports court and wall seating
- 10 - Woodland Walk
- Bin shed and Bike Storage point
- Sections

## Section A



Scale 1:250

Below the allotments the underground car park holds a total of 38 spaces accommodating cars for the housing without a parking spot next to their house. Additional spaces can be purchased for a fee. The roof of the car park acts as a green roof allowing the allotments to flourish.

## Section B



Scale 1:100

Woodland walk paths lead pedestrians round the edge of the development allowing residents of the surrounding area to be apart of the community and use the open green spaces. Many of the trees have been retained and some introduced creating a succession. Sandstone wall seating provides a place of rest for people passing through or using the multi sports court whilst creating a sense of enclosure for the surrounding houses.



A playground situated next to the café and nursery provides a place of safety for children to play while parents or carers relax at a safe distance.



A café and nursery will be installed into the historic swimming pool. The emptied pool will become a soft play area for children with the cafe and seat above.



The green walk way is a prominent courtyard with access to the rest of the site. Benches provide seating amongst the rows of naturalistic prairie planting that soften the direct linear pathways.

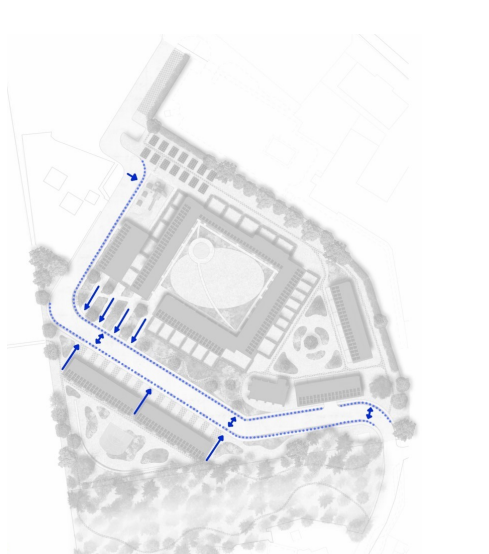


The grade two listed chapel will be refurbished into a community store. Local produce from the allotments and near by farmers will be sold.



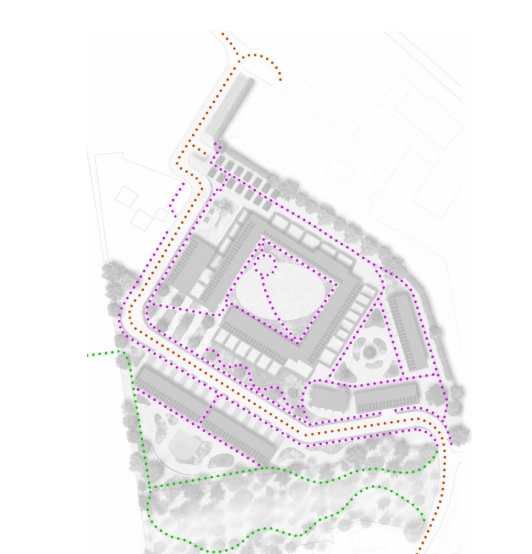
Among the naturalistic planting the gazebo creates a shelter for residents. Occupants predominantly use the space due to their minimal gardens.

## Water Movement



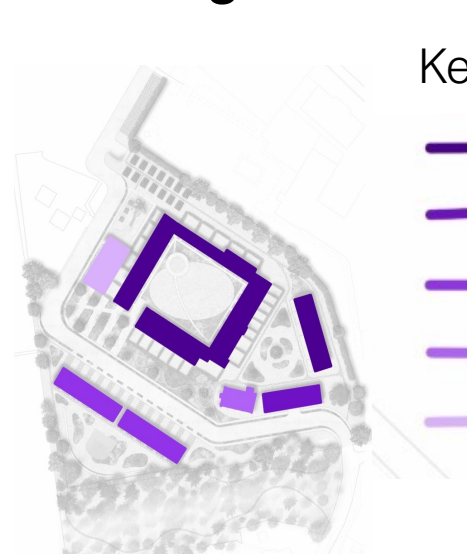
- Key:
- Swale
  - Water flow

## Movement Routes



- Key:
- Vehicles
  - Pedestrians
  - PROW

## Buildings



## Key:

- Two Storey housing with underground car parking
- Apartments with car parking on ground floor
- Two storey housing with car parking
- Community shop selling local food produce
- Café and nursery



## Materials

The selected materials were chosen based on their sustainability and relation to Adel's local character.

Concrete creates a defined road and pedestrian walk way. Sandstone walls and paving harmoniously match with the surrounding buildings and texture. Permeable paving counteracts the hard scaping and allows water to drain. Recycled red rubber crumb fashions a soft yet stable surface for recreational use. Spot lights line the main movement routes through the site and illuminate during the night.

