

# LA505 Public Realm Design

## The Cultural Quarter

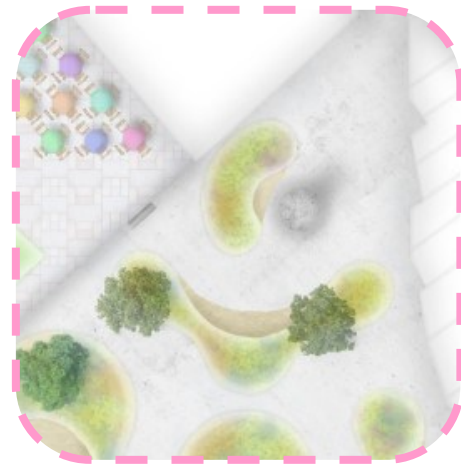
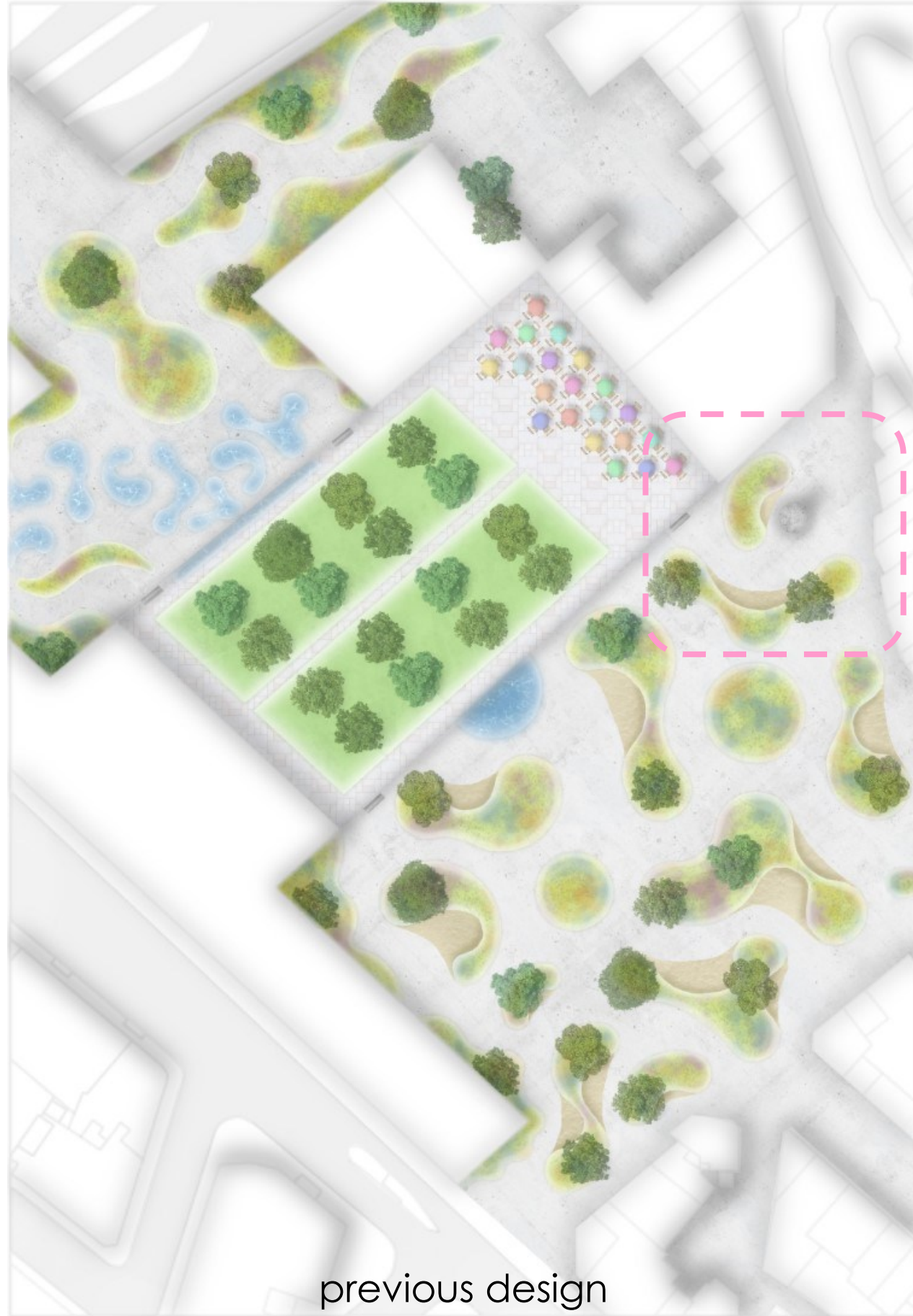
By Georgie Templeton



Scale 1: 100 on A2



# Developing from last Module



The chosen area for LA505 is a threshold maintaining a historic statue of Richard Oastler who was renowned for looking after his workers, including young children who worked in the Woollen Mills.



The existing site is a small pedestrian zone with a prominent hard scape. Although there are surrounding trees, it lacks vegetation and biodiversity.



A road runs parallel to the site enclosing the space. There is virtually no space for recreational activities and seating for pedestrians to socialise.



The threshold is located next to the Oastler Shopping Centre which will soon be demolished creating an opportunity for green space to be introduced to Bradford city centre.



# Retaining Inspiration from LA504



Bradford is a culturally diverse society and experiences many social issues.

Ponta Del Gada is the capital city of the Azores Islands of the west coast of Portugal. Through out the city there culture is displayed through the artistic means of Street Art. Taking Inspiration from this, Bradford could celebrate there cultural diversity through the use of Street Art.

The Piece above is a mural on John Street in Bradford, painted by Mr Cenz a Street Artist and commissioned by a Bradford Marketing Company, named Monster Outdoor.

The painting illustrates a woman "Positioned between darkness and light" and represents the "suffering victims of domestic violence, and the light that hopefully we can bring by raising awareness and starting difficult conversations surrounding the topic", said the company's CEO Mohammed Farooq.

The mural is part of a campaign to raise awareness of domestic violence, particularly in the South Asian community.



Crossing over to LA506, I also took inspiration from Mirei Shigemori, a Japanese Landscape architect and garden designer who explored the use modern materials to change and enhance the users experience of the Landscape.

The image above from Tofukuji Temple Garden illustrates Shigemori's use of materials with natural elements to create a contemporary design.



I found images of Junya Ishigami's 'The Water Garden' on Pinterest and wanted to explore the use of the organic shapes in contrast to the hard landscape and Architecture of Bradford.

The organic shapes appear natural and create movement through a space. This would work well with the textures and movement of the planting scheme through out the site.



# Site Analysis



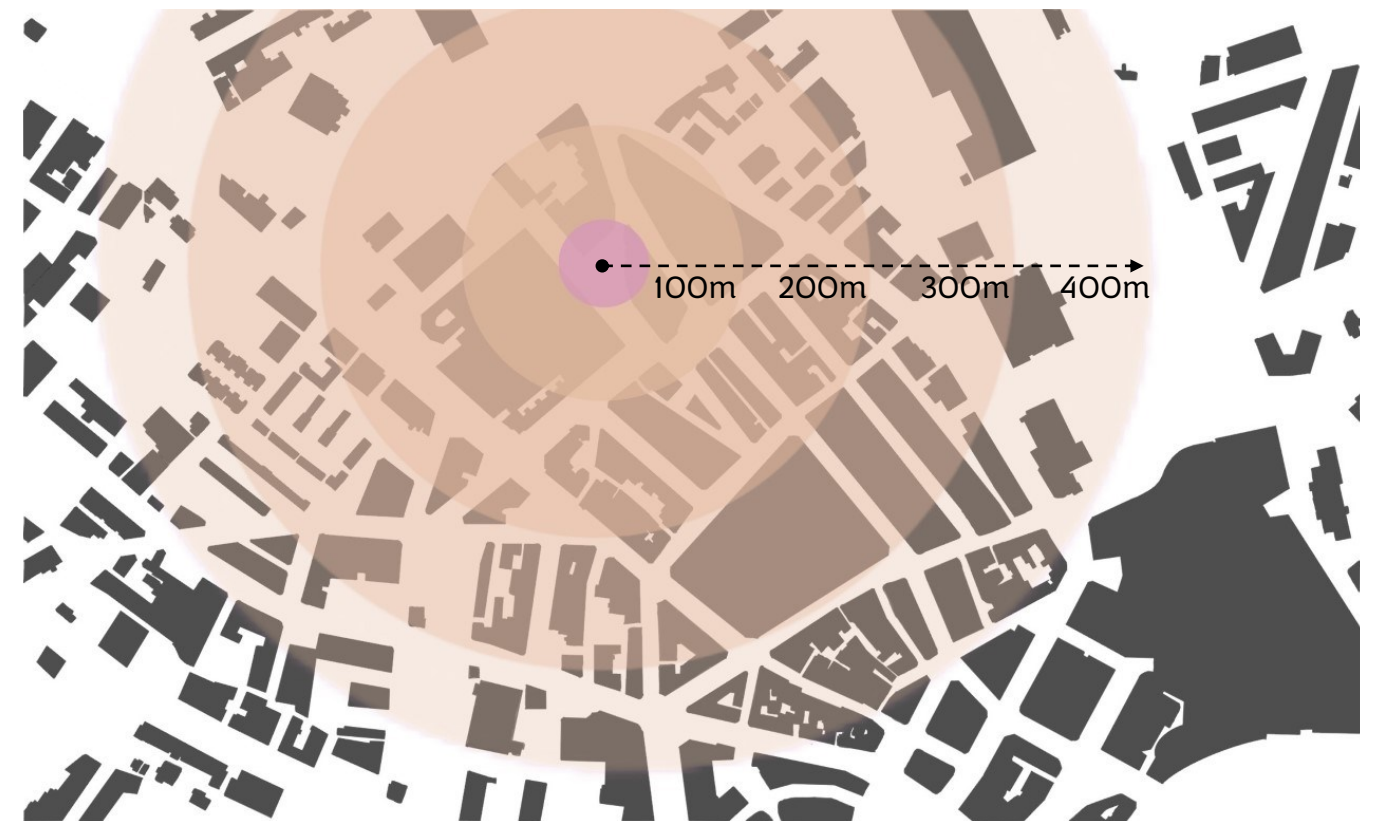
**Site Location:** The Oastler Statue is located in the north of Bradford City centre in a courtyard between rows of shops and the old Oastler Shopping Centre which will soon be demolished.



**Green Infrastructure:** As a whole Bradford City Centre lacks green infrastructure and what does exist is predominantly mown grass lawn which maintains very low levels of Biodiversity.



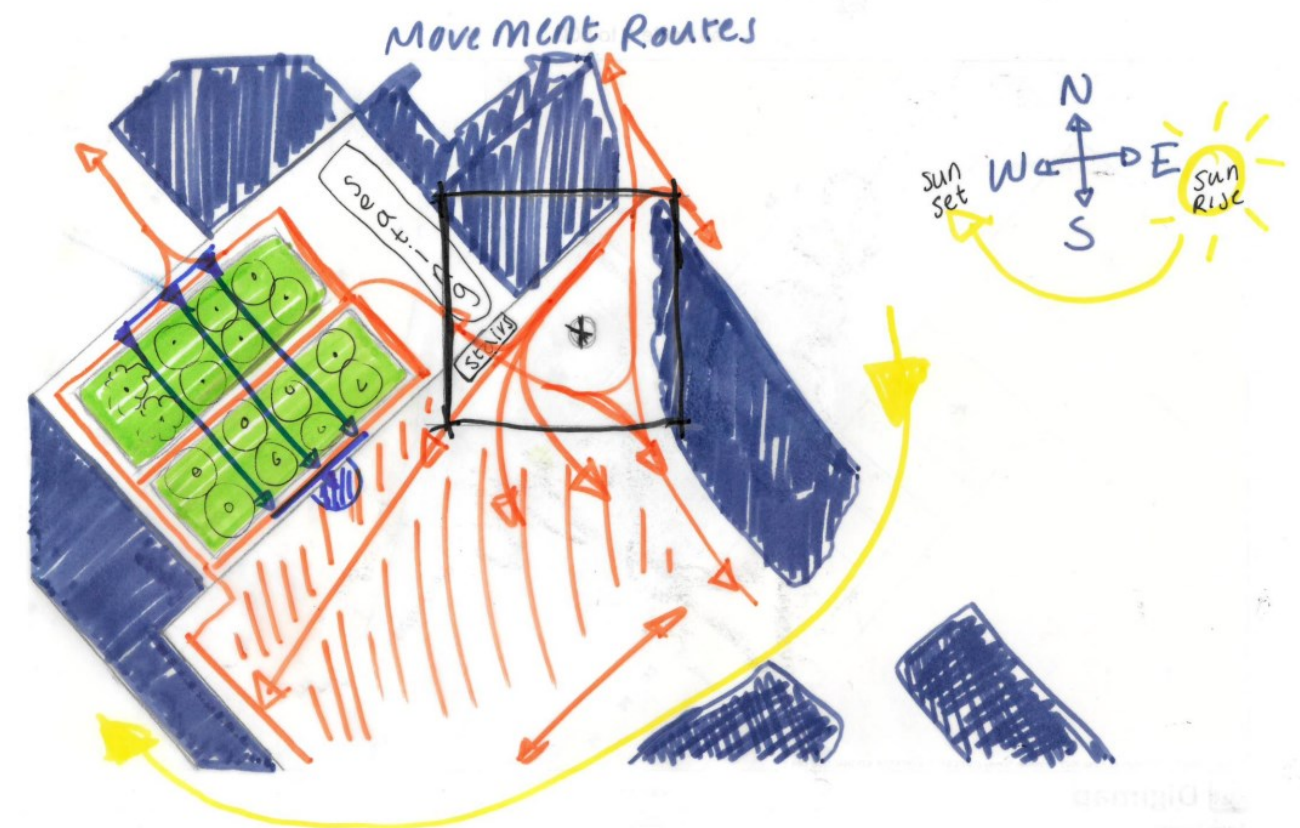
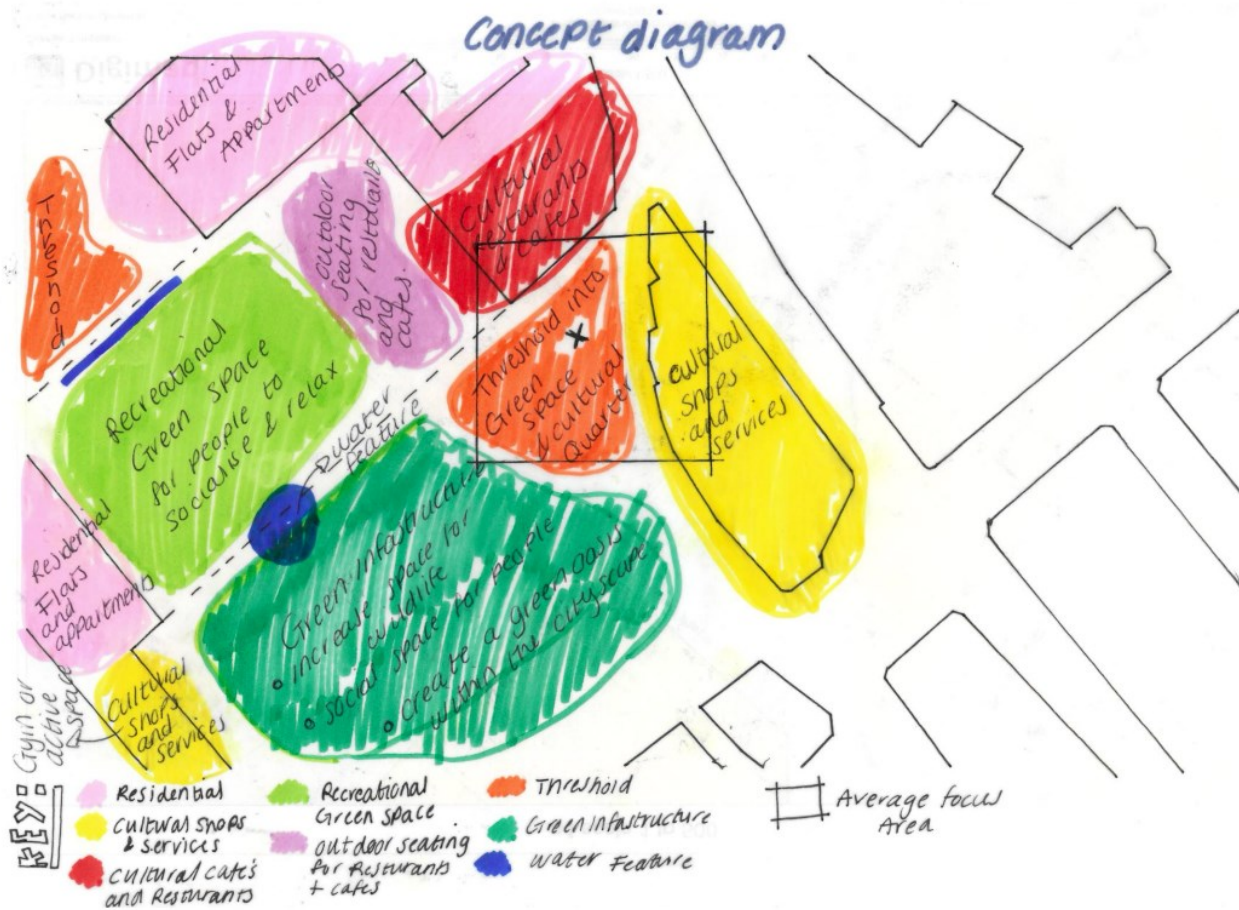
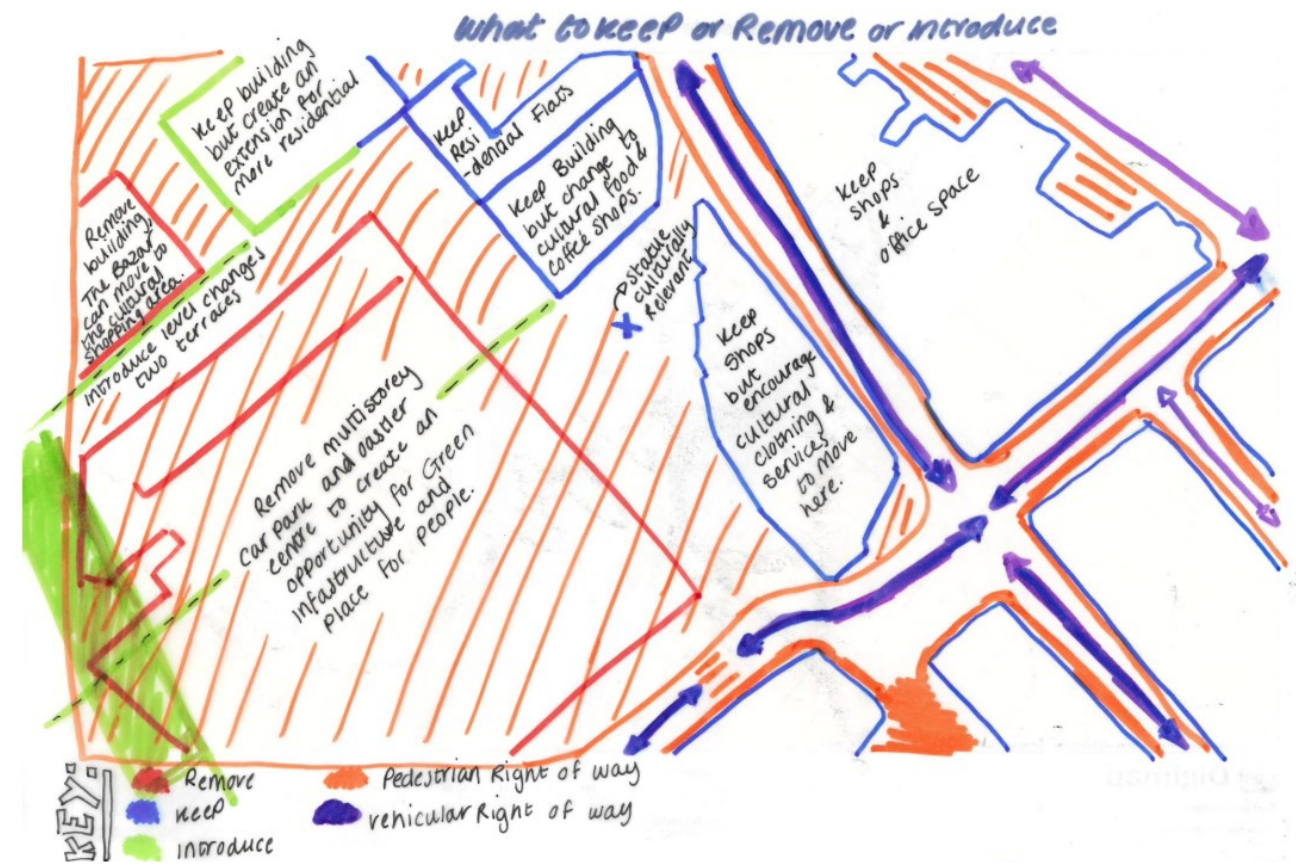
**Main Roads:** Bradford City Centre is a vehicular dominant space with a lack of pedestrian only spaces resulting in a lack of safe social areas for people to stop and relax.



**Walking Distances:** The average walking distance in 5 minutes is 400m. The site location is a short walk from the train station, places of worship, services, residential and retail.



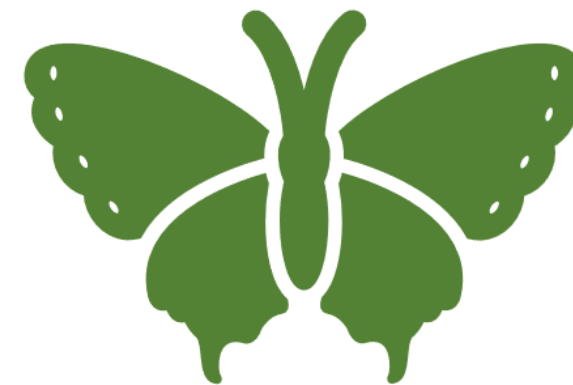
# Focused Site Analysis





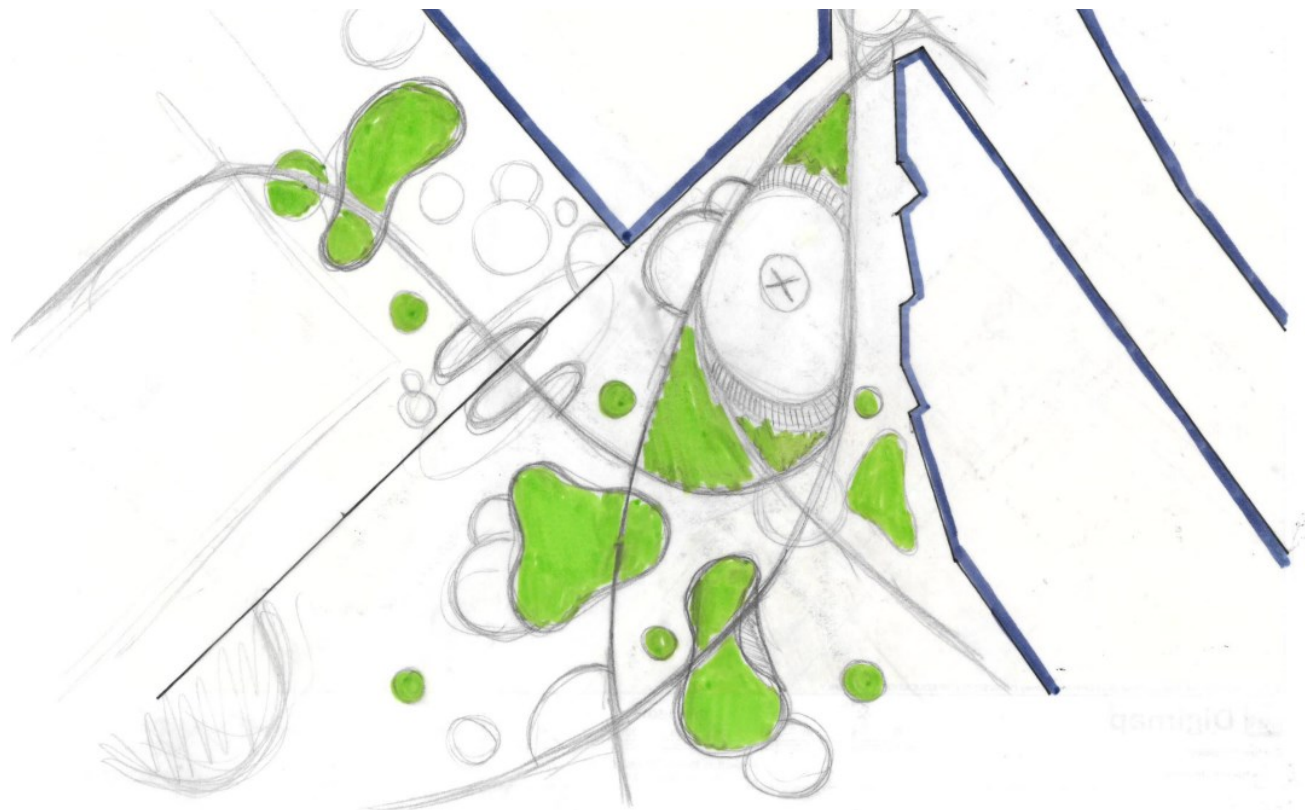
# Aims and Objectives

- To create open green spaces that provide social and recreational opportunities.
- To develop Bradford as a child friendly city by providing opportunities for exploration and play.
- To increase biodiversity in Bradford City Centre.
- To construct routes for disability access through the site.

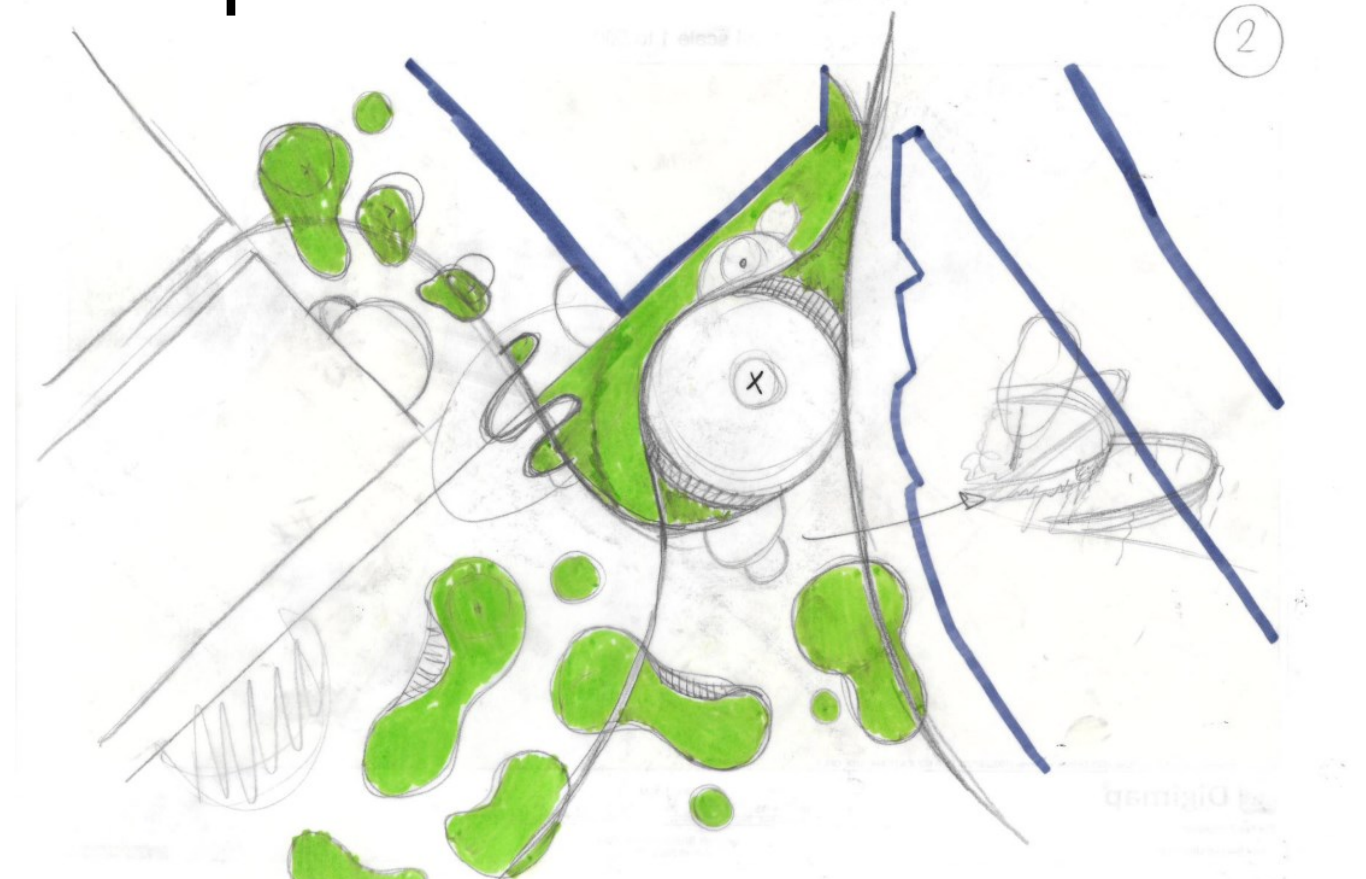




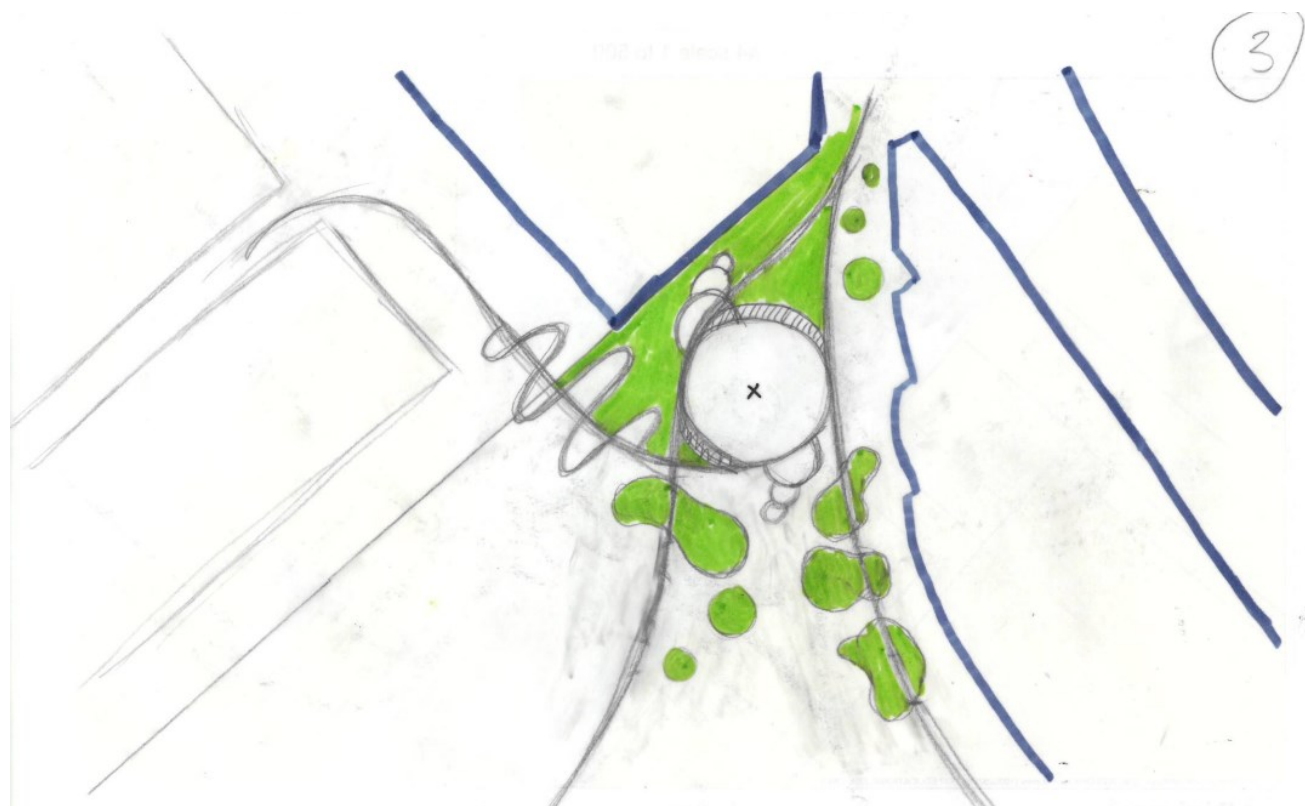
# Design Development



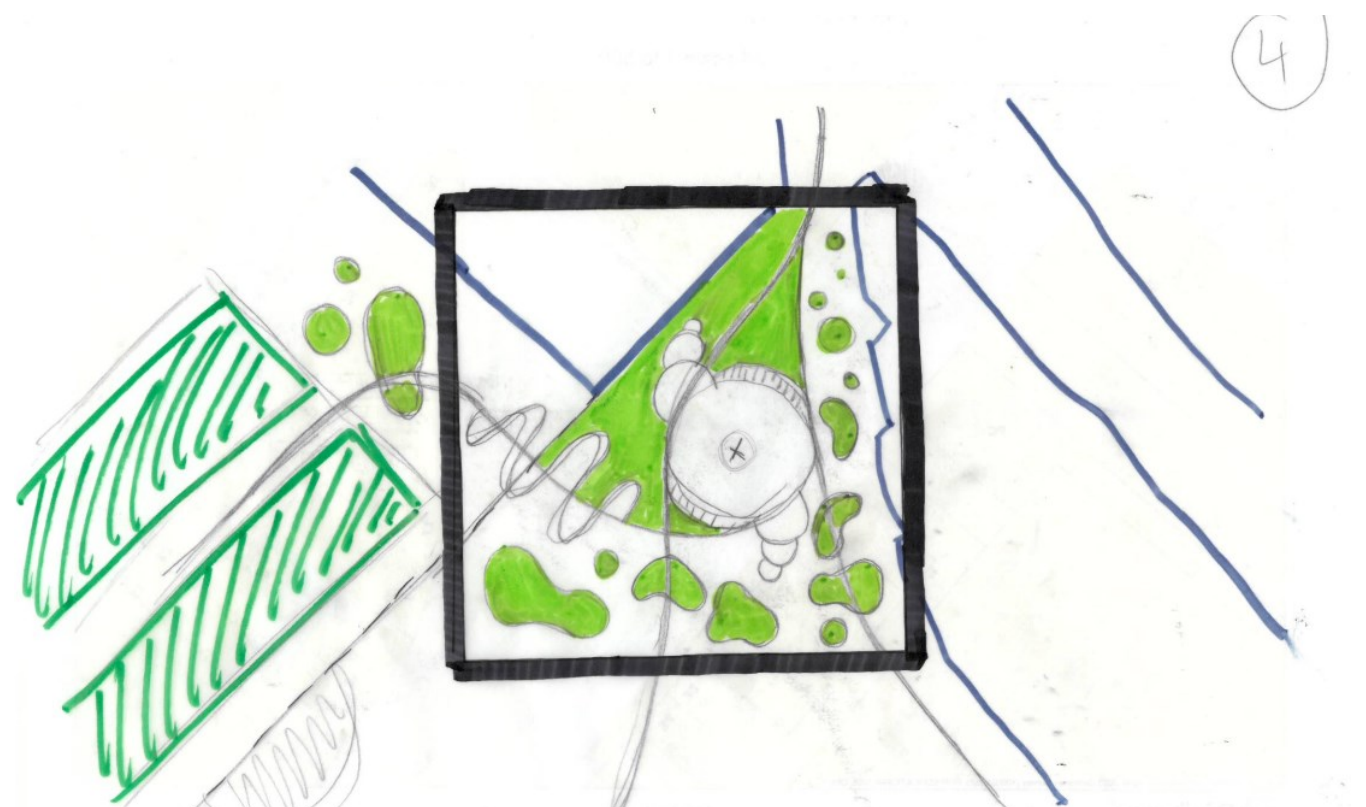
**Version 1:** Building on my design from LA504 I retained my inspiration of the organic shapes from Junya Ishigami's 'The Water Garden', whilst creating defined pathways through the site.



**Version 2:** I implemented creative play sculptures and open green spaces which could be used for creative play to develop Bradford City Centre as a child friendly place.



**Version 3:** I aimed to create a social hub surrounding the Richard Oastler emphasising the sculpture as the main foci of the space.





**Version 4:** I then refined the design to fit the 50 X 50m scale from the brief and ensured that I had completed my aims and objectives within the design.



# Master Plan

## Key:

-  Granite Y Pattern Paving
-  Grass Lawn
-  Sandstone Paving
-  Mosaic Indian sandstone Paving
-  Resin Bound Gravel
-  Ramp
-  Bronze Powder Coated Aluminium
-  Ornamental planting beds
-  Teak wooden benches
-  Wild Flower Meadow



0

Scale 1: 200 on A2

50m



# Visuals









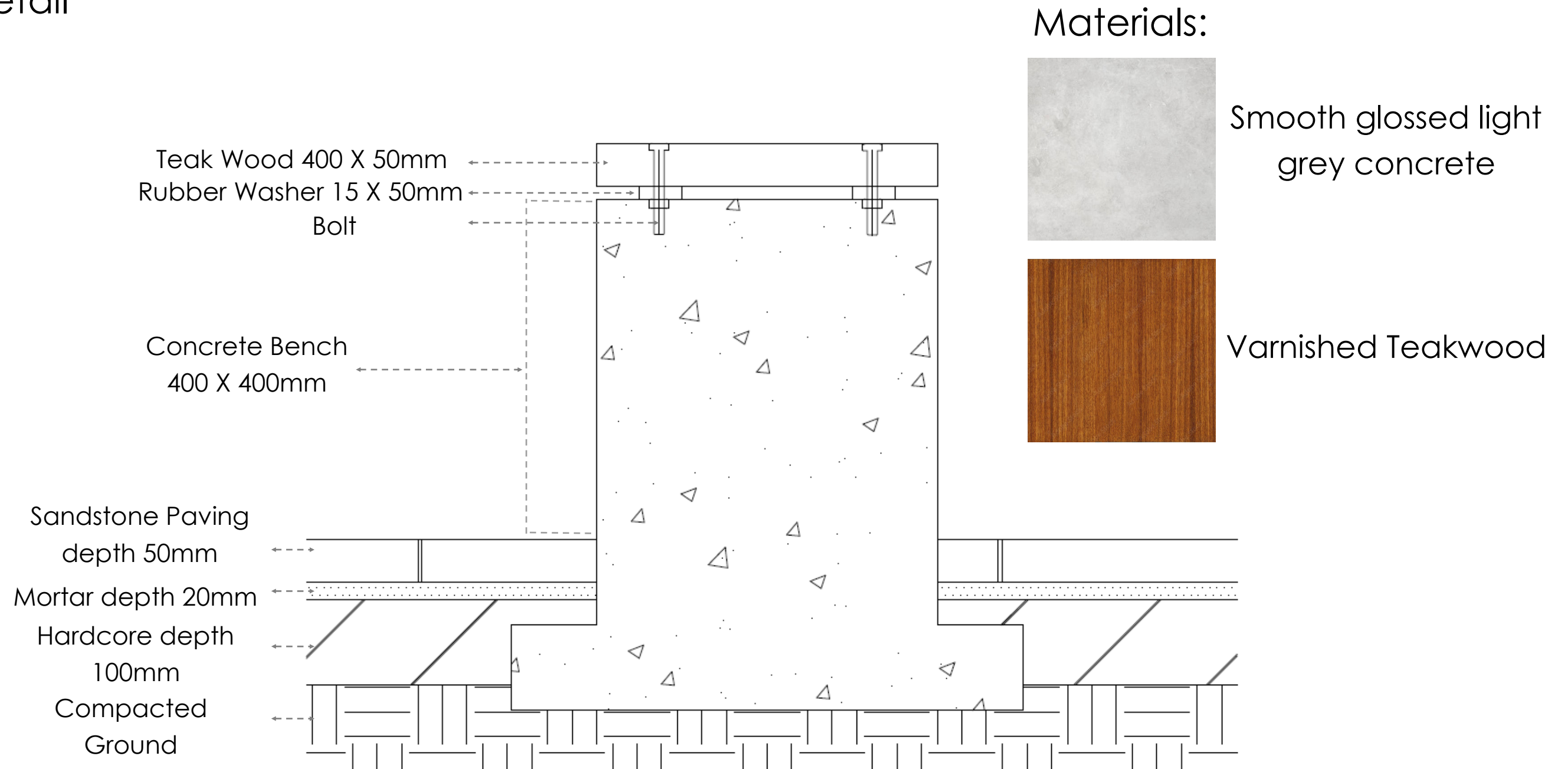
# Construction Drawings



The bench planter surrounds the Oastler statue creating an enclosed social space. Along the bench, wooden slats create a minimal and comfortable seat for users to relax and socialise within the space. The light grey concrete feels smooth and are soft on the eye.

## Bench Detail

Scale 1:5





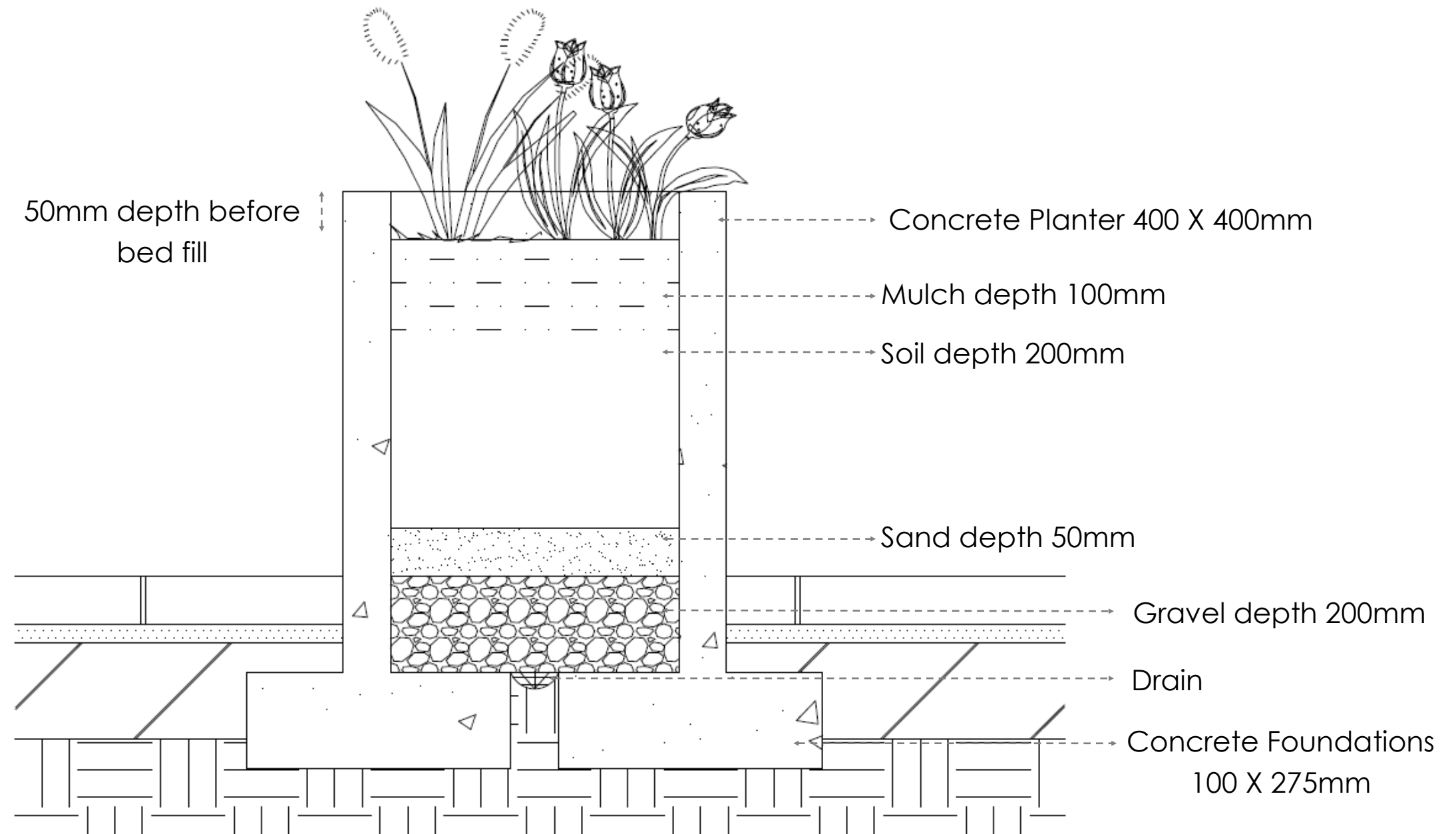
# Construction Drawings



The planter consists of concrete which encompasses growing medium for the plants and a drainage system at the base. Plants chosen for the planter will have shallow roots and be suitable for the environment.

## Planter Detail

Scale 1:5





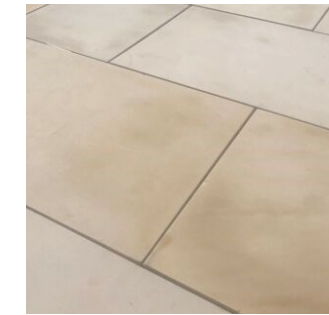
# Construction Drawings



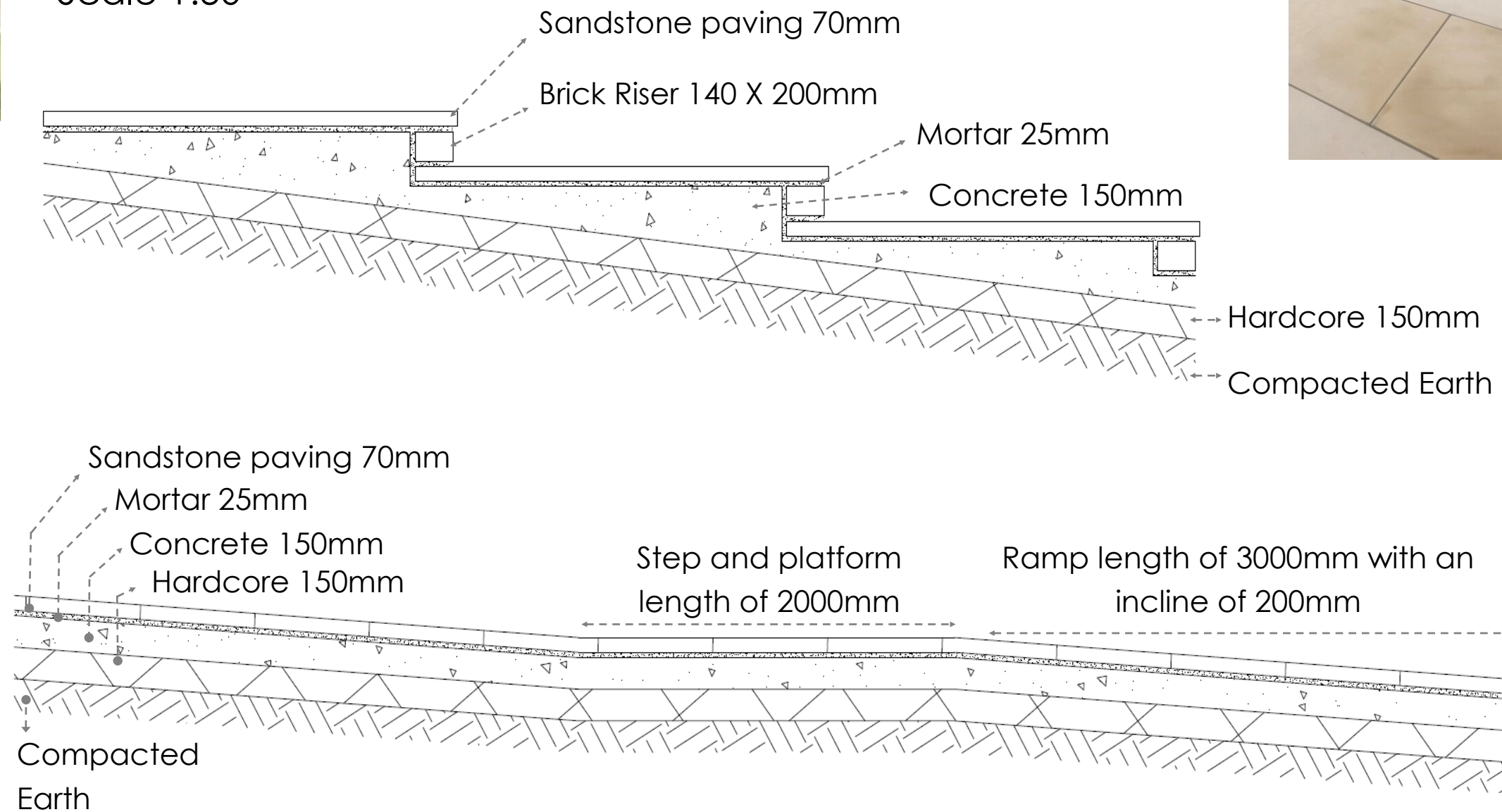
Ramp and steps

Scale 1:30

Materials:



Sandstone Paving



The ramp creates disabled access to the design whilst the stair case through the centre provide a faster alternative route for more able users.

The five ramps have shallow inclines of 200mm and are divided by the steps and curved platforms on either ends.

The tactile transition in material between the ramp and the steps provides a safe path for the blind while also enhancing the design's aesthetics.



# Construction Drawings



Materials:



Bronze Powder  
Coated  
Aluminium

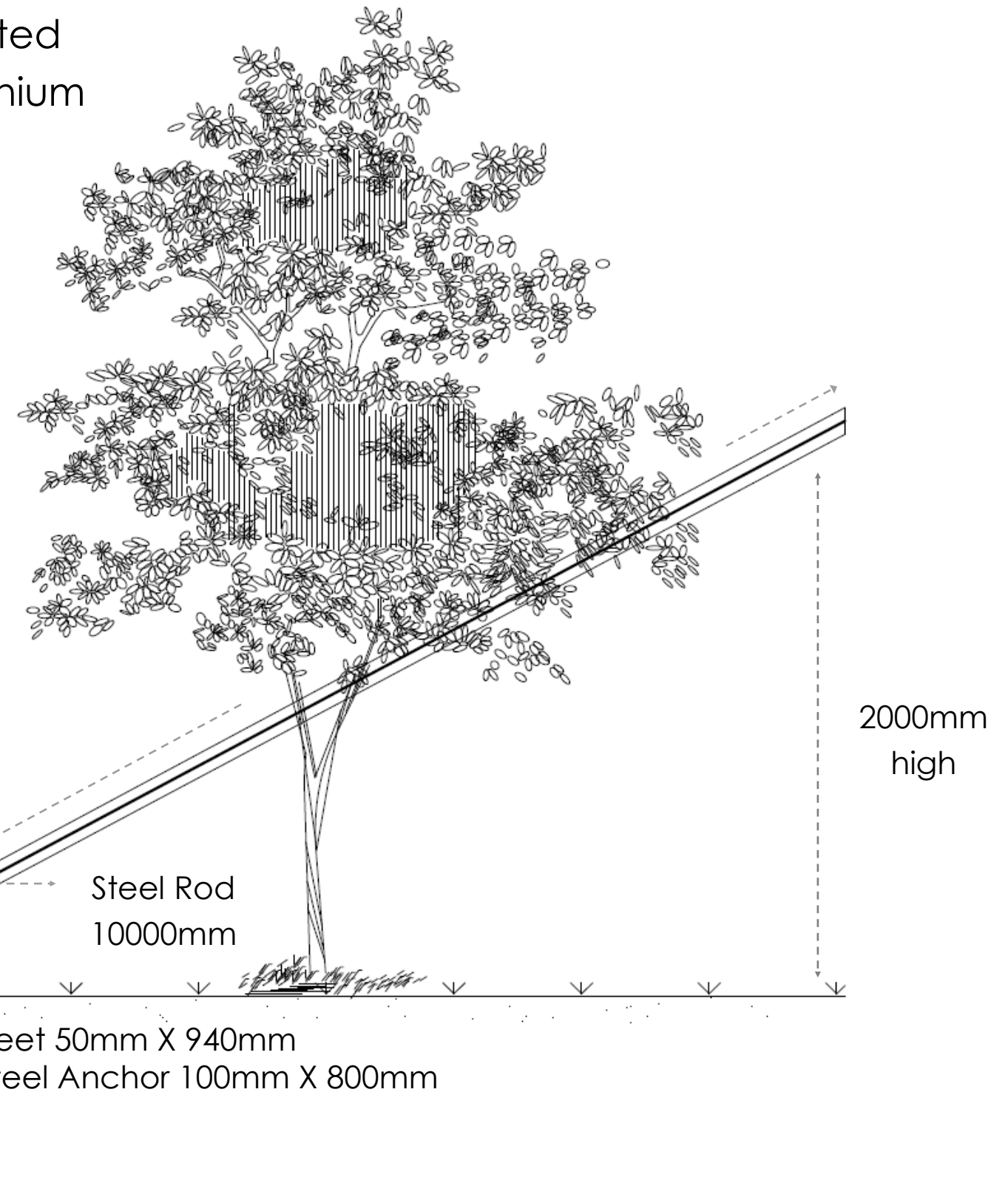
## Bench Detail

Scale 1:20

The Aluminium structures allow for creative play within the design whilst maintaining a minimal stylistic sculpture.

Each hoop allows for different opportunities and acts of play. The smaller hoop, no higher than a bench can be used to sit and relax or climb for younger children. The medium hoop offers a slope to slide down. While the largest hoop could be used to climb or swing on.

Constructed of bronze powder coated aluminium the structures are strong and textured for grip. Grass lawn underneath creates a soft landing while the ornamental planting encloses the space for safety.



Earth  
150mm

Bolt

Concrete  
500mm

Diameter 5000mm

Steel Rod  
10000mm

Steel Sheet 50mm X 940mm  
Corten Steel Anchor 100mm X 800mm

2000mm  
high

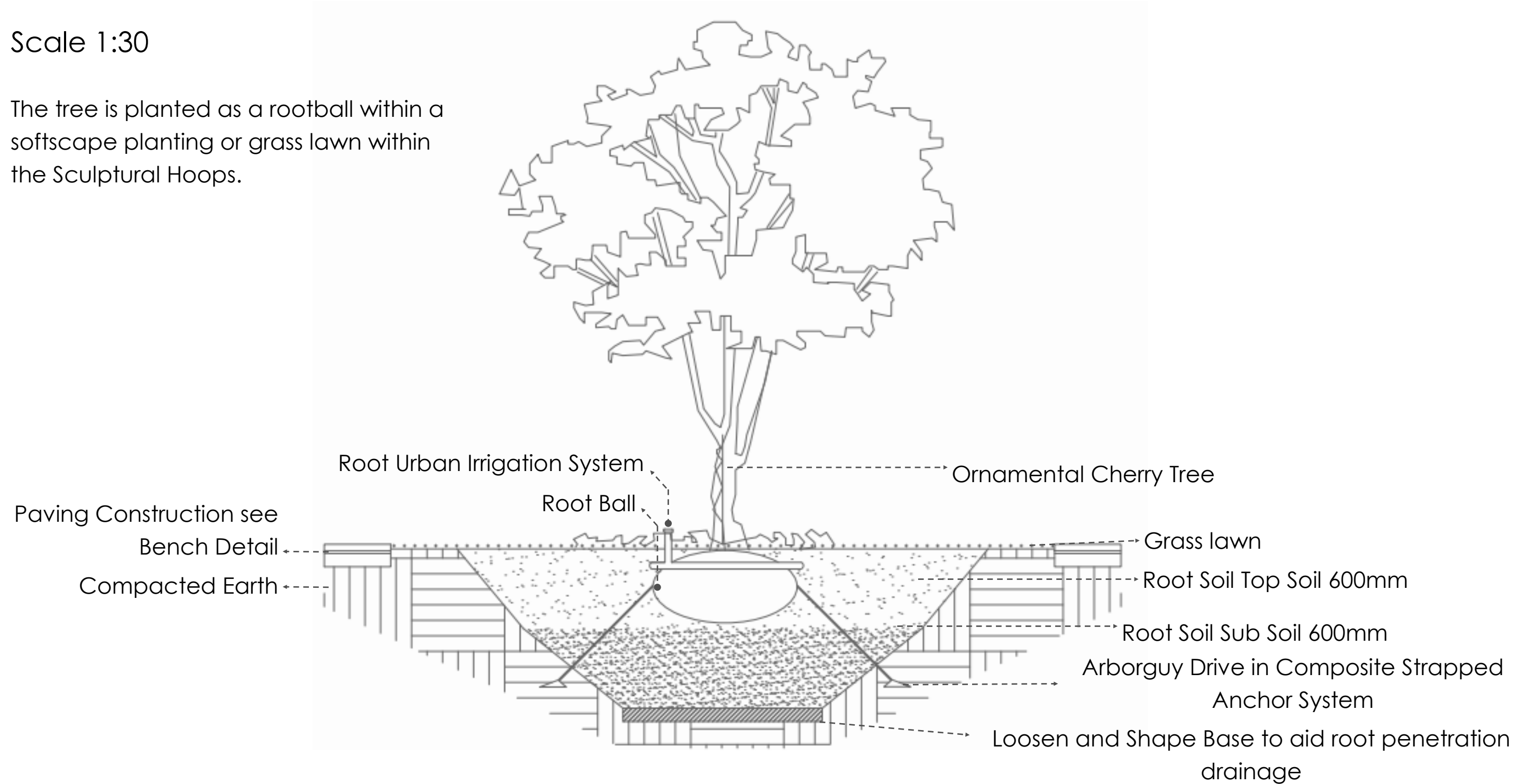


# Tree Pit

## Tree Pit in Soft Scape

Scale 1:30

The tree is planted as a rootball within a softscape planting or grass lawn within the Sculptural Hoops.





# Planting

For the of the site I have aimed to design a planting plan that promotes biodiversity by choosing pollinating plants. I will also accompany them with Mason Bee Hives and Bat Boxes to develop the ecosystem, developing wildlife within Bradford City Centre.

## Ornamental Planting



*Salvia*  
'Caradonna'



*Aster novi-belgii*  
'Blue Lapis'



*Nepta subsessilis*



*Allium fistulosum*



*Gaura* 'Papillon'



*Iris sibirica*  
'Moonlight  
Waves'



*Calamagrostis*  
*brachytic*



*Carex testacea*



*Cornus*  
*Sanguinea*

## Wild Flower Meadow



A natural barrier to the street art is created by the wild flower meadow, which also creates an ecosystem and a refuge for wildlife. The meadow will be shaped at the edges by a mown lawn creating recreational and social spaces.

In order to entice bees to make the place their home, ornamental planting is combined with Mason Bee Hives. While the trees accommodate bat boxes developing the ecosystem.

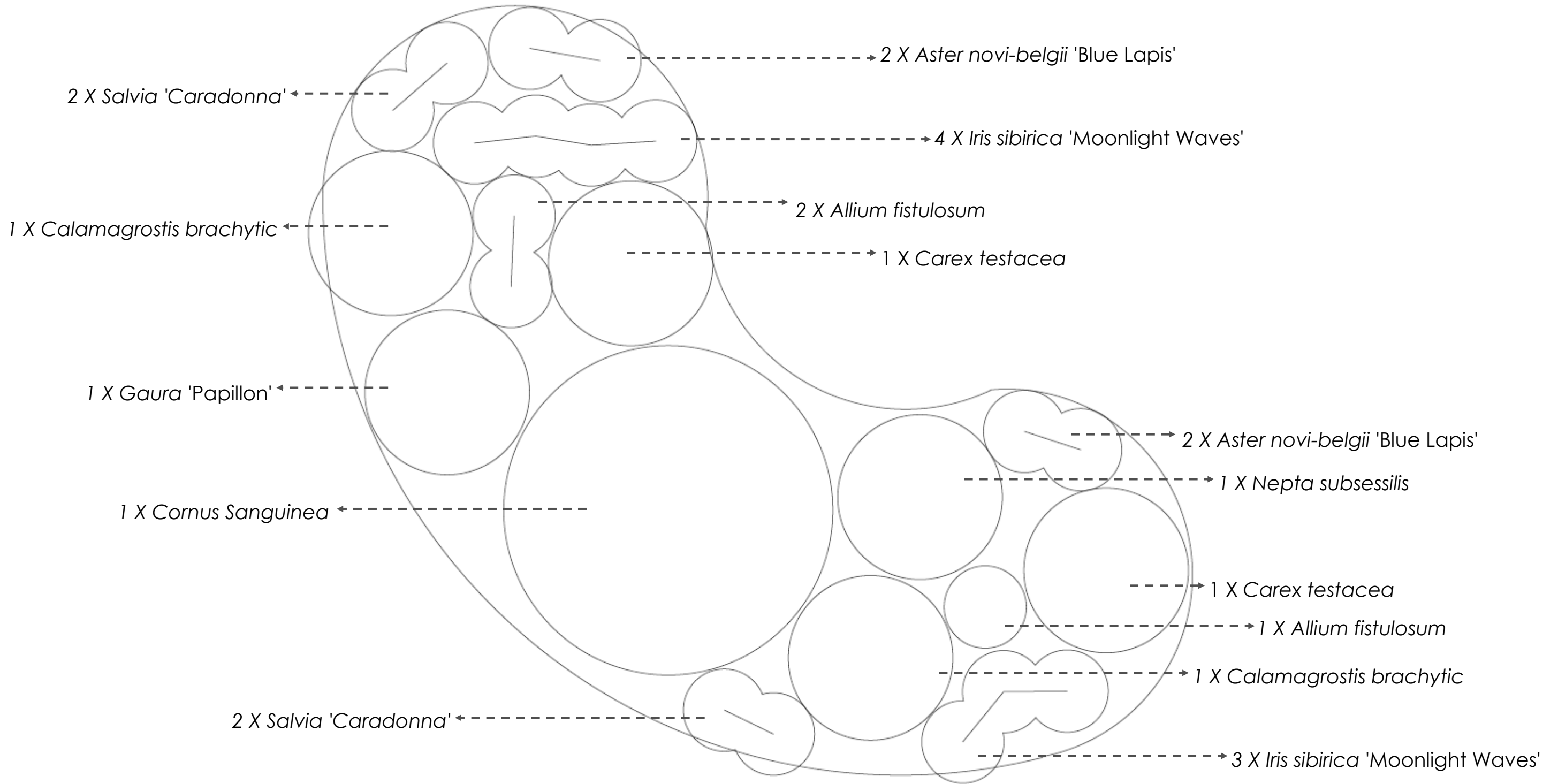




# Planting Plan

Organic planter

Scale 1:20





# Planting Calender

Spring

Summer

Autumn

Winter

*Aster novi-belgii* 'Blue Lapis'



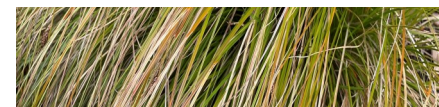
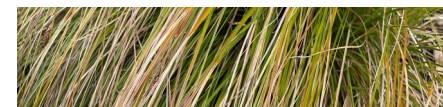
*Allium fistulosum*



*Calamagrostis brachytricha*



*Carex testacea*



*Cornus Sanguinea*



*Gaura* 'Papillon'



*Iris sibirica* 'Moonlight Waves'



*Nepeta subsessilis*



*Cornus Sanguinea*





# Planting Schedule

Shrubs								
Number	Species	Common Name	Size (Height)	Root	Pot Size	Habit	Spacing	Density
1	<i>Cornus Sanguinea</i>	Dog wood 'Mid Winterfire'	500-1000mm	Container	5L	well filled pot	500mm	4m/2

Grass								
Number	Species	Common Name	Size (Height)	Root	Pot Size	Habit	Spacing	Density
2	<i>Calamagrostis brachytricha</i>	Korean Feather Reed Grass	500-1000mm	Container	5L	Well filled pot	450mm	5m/2
2	<i>Carex testacea</i>	Orange New Zealand sedge	500mm	Container	2L	Well filled pot	450mm	5m/2

Perennials								
Number	Species	Common Name	Size (Height)	Root	Pot Size	Habit	Spacing	Density
4	<i>Aster novi-belgii 'Blue Lapis'</i>		500mm	Container	2L	Well filled pot	450mm	5m/2
1	<i>Gaura 'Papillon'</i>		500mm	Container	2L	Well filled pot	450mm	5/m2
7	<i>Iris sibirica 'Moonlight Waves'</i>	Japanese Water Iris 'Moonlight Waves'	1000mm	Container	5L	Clumping	500mm	1/m2
1	<i>Nepta subsessilis</i>	Cat Mint	1000mm	Container	5L	Well filled pot	500mm	1/m2
4	<i>Salvia 'Caradonna'</i>		500mm	Container	2L	Well filled pot	450mm	5m/2

Bulbs								
Number	Species	Common Name	Size (Height)	Placement	Density			
3	<i>Allium fistulosum</i>	Welsh Onion	1000mm	Refer to Planting Plan	5m/2			

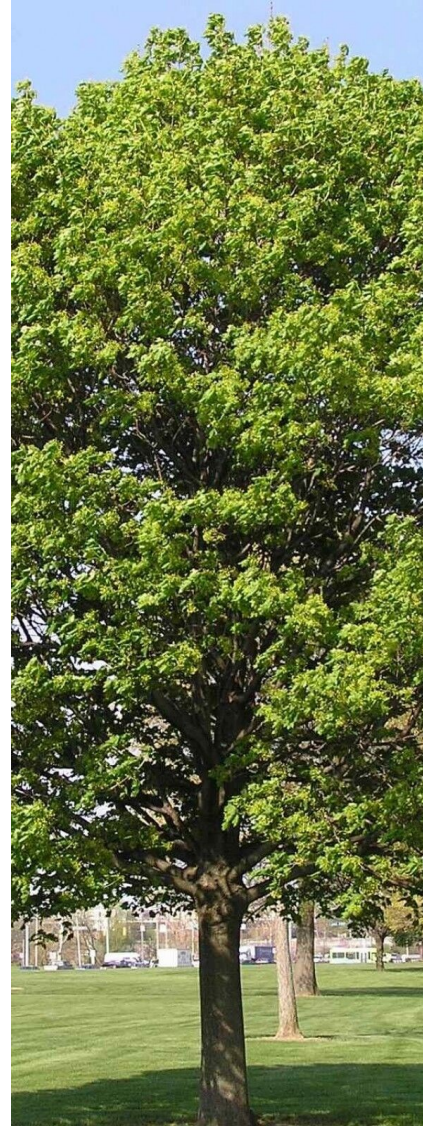


# Trees

Trees chosen for the site have been selected due to their pollution tolerance, seasonal colour and interest.



*Ginkgo biloba*



*Acer  
platanoides*



*Japanese  
zelkova*



*Magnolia  
Grandiflora*



*Prunus Serrula-  
ta 'Kanzan'*

Spring



Summer



Autumn

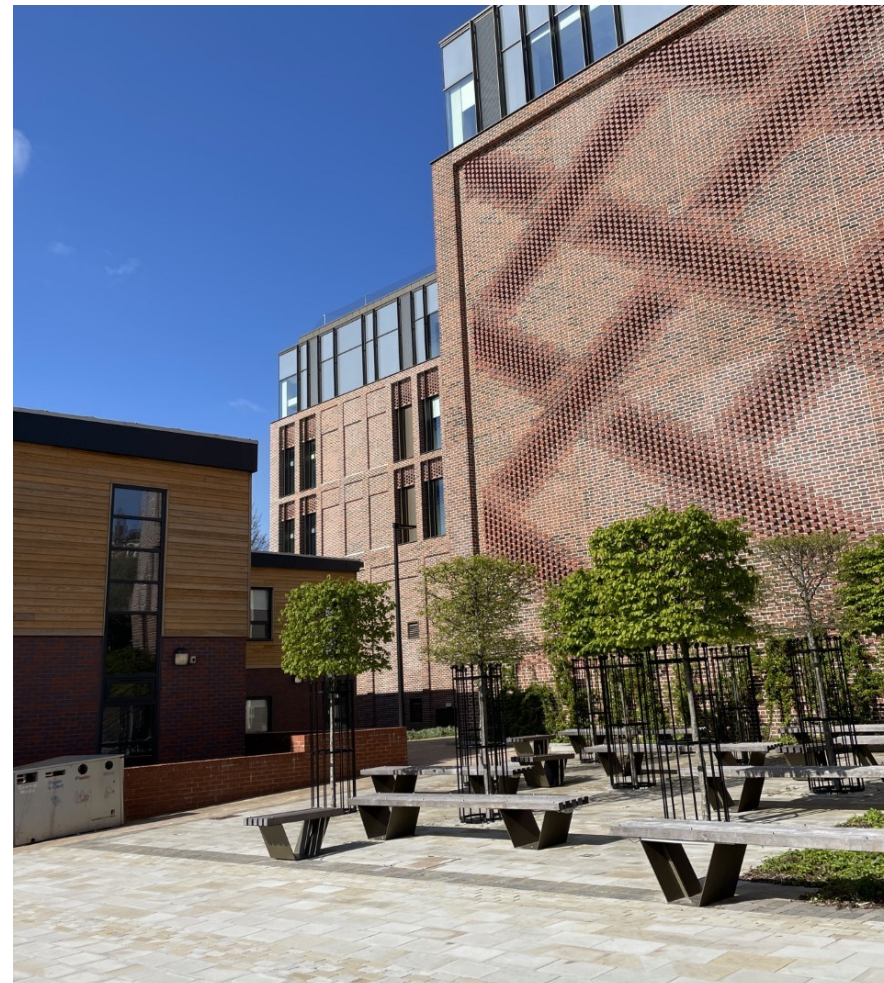
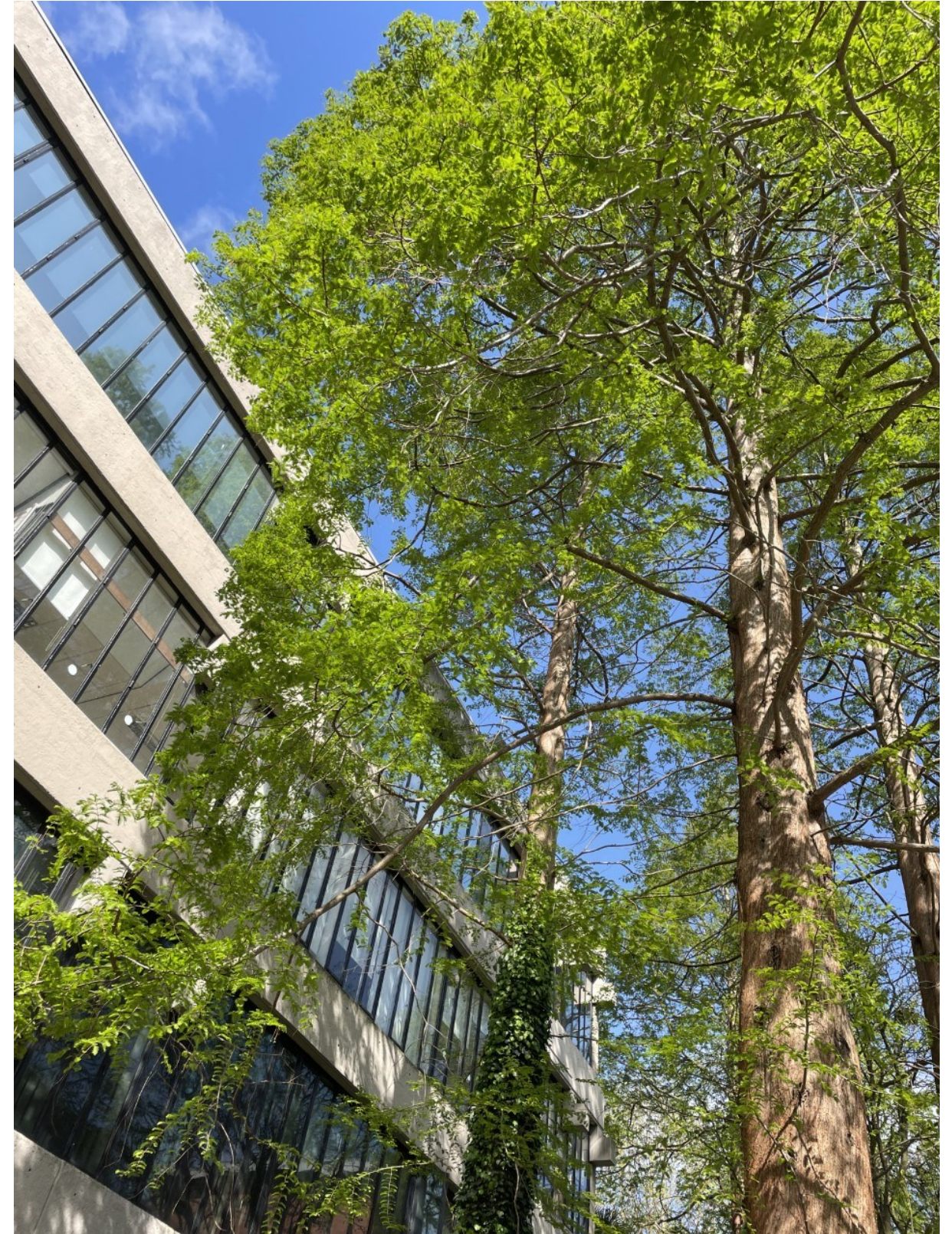


Winter





# University of Leeds Tree Tour



During the Tree tour I made notes of some of the information advice we received along the way.

Mason Bee hives are very effective for pollinators. The best tree planting is made up of a variety of species as it enhances biodiversity and the ecosystem. This also reduces the risk of diseases spreading. Metal should not be placed around the trunk or roots of a tree as the tree will grow around and absorb it. Choose and place trees that won't be cut down.



# Questions

1) What are the most comfortable width and height of a seat?

Width: 550mm

Height: 450mm

2) What is wrong with the pavements in this image:



The pavement has sunk due to a lack of support from the foundations.

The unlevel surface has resulted in dips where dirt has gathered and moss has started to grow suggesting that there is no maintenance.

3) Based on the visit near NEXUS, what are the main issues here:



Both the paving around the pit and the concrete on top are not porous materials and so stop surface water soaking into the ground and the tree receiving water.

The size of the tree pit is also quite small for the size of the tree restricting growth and there for the well being of the tree.



